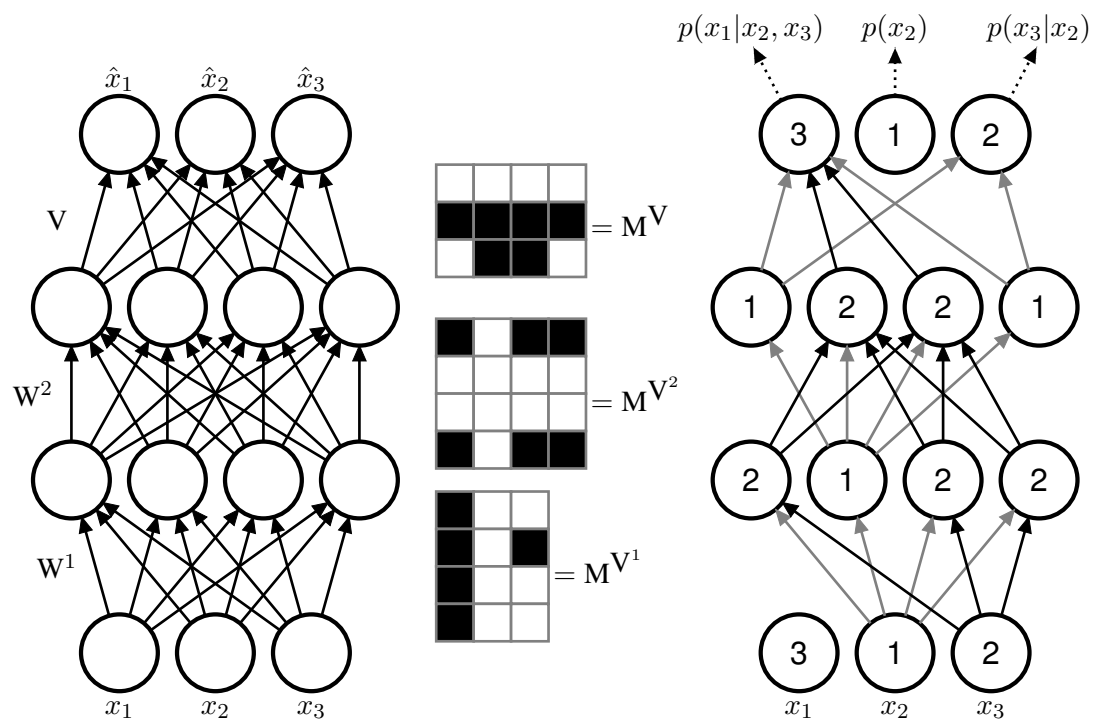


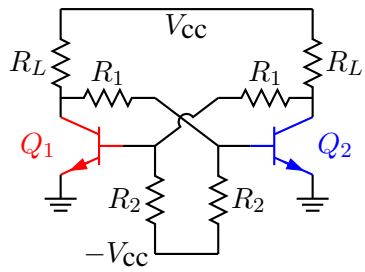
Attention.m4



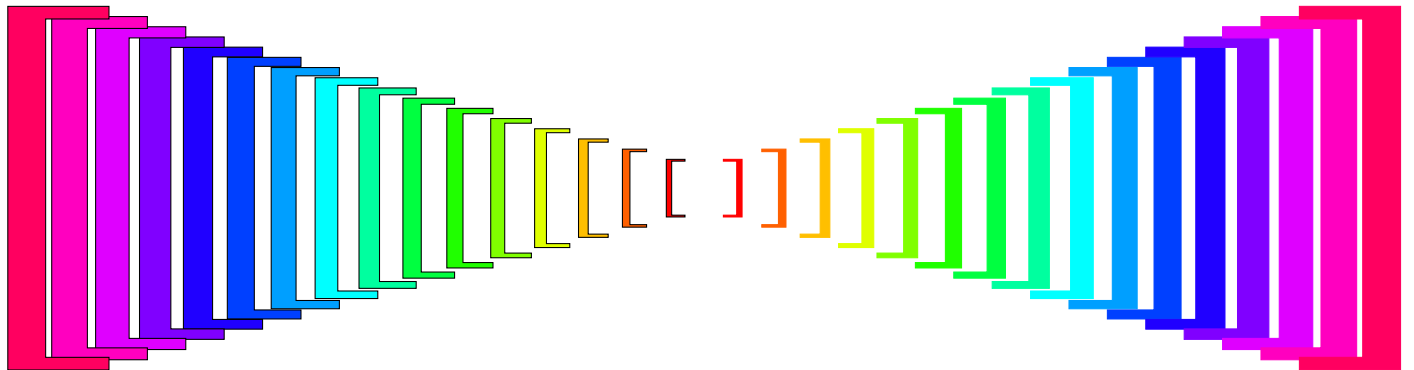
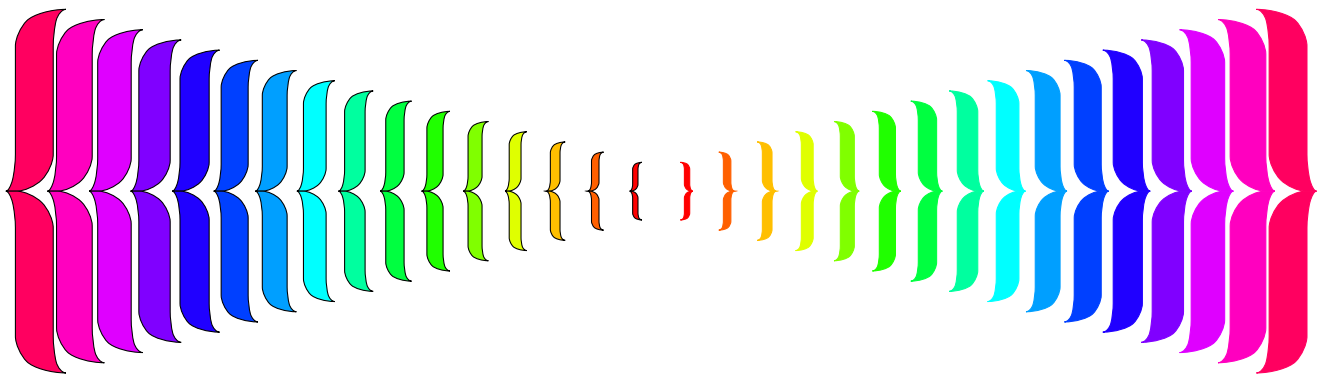
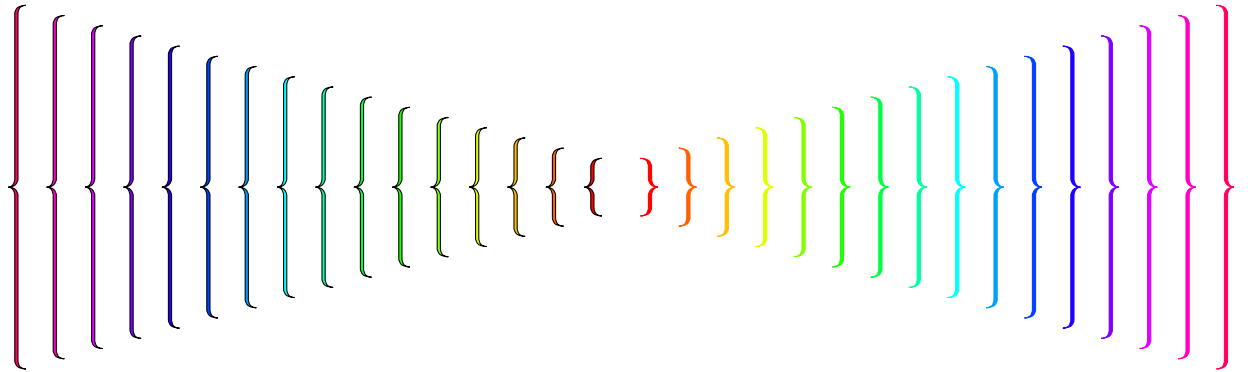
Autoencoder.m4



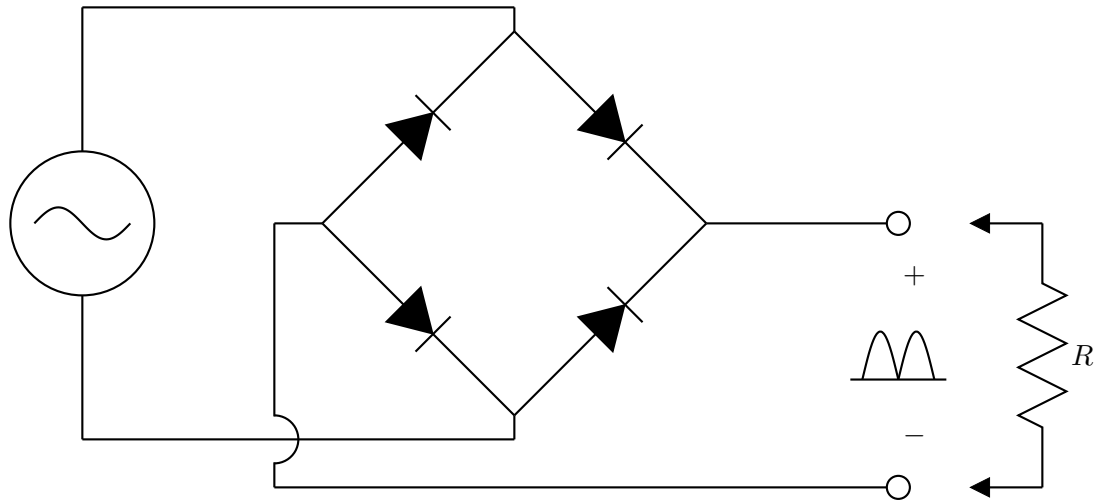
Birds.m4



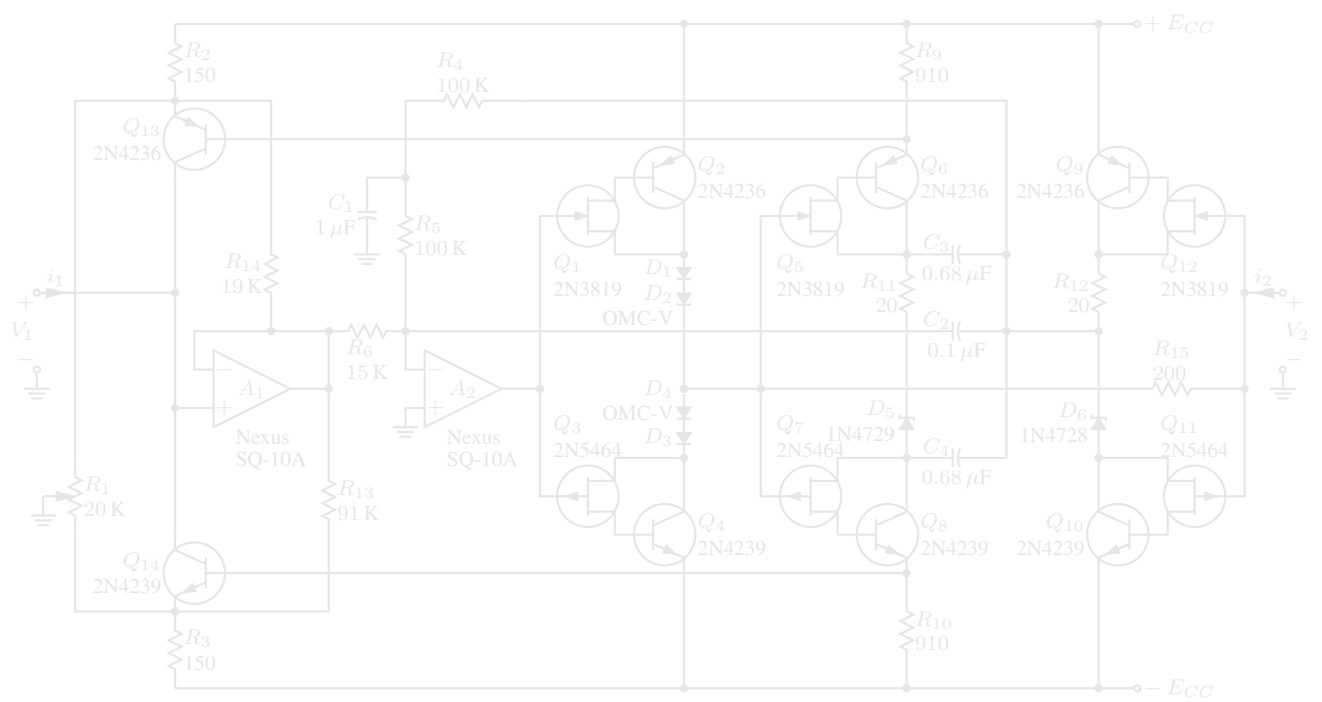
Bistable.m4



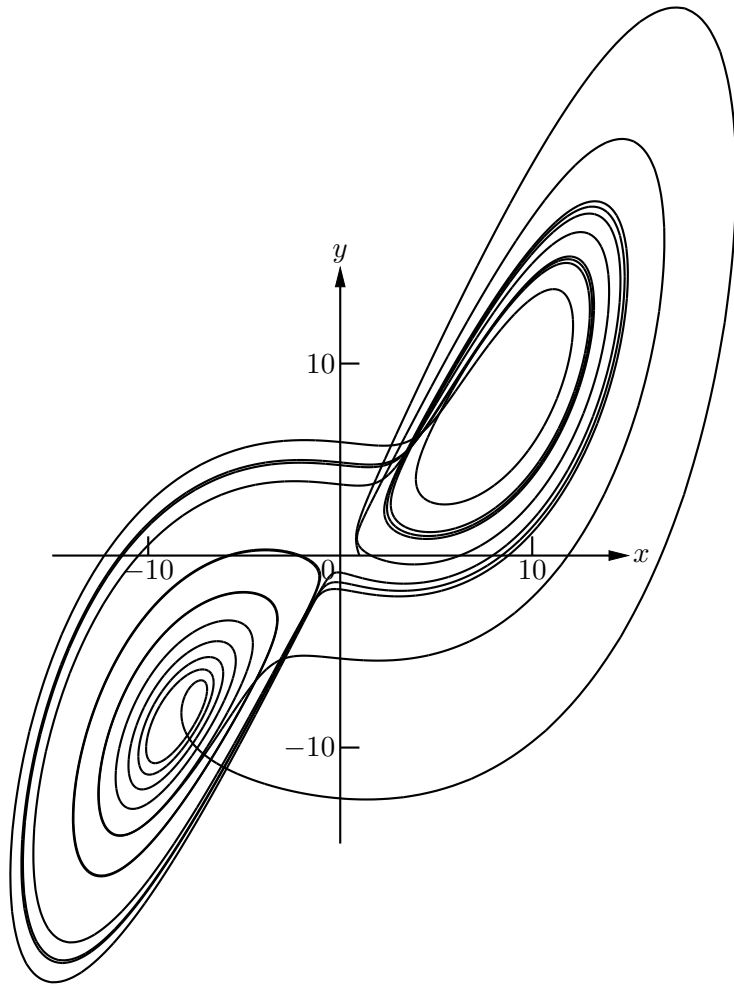
Brace.m4



Bridge.m4

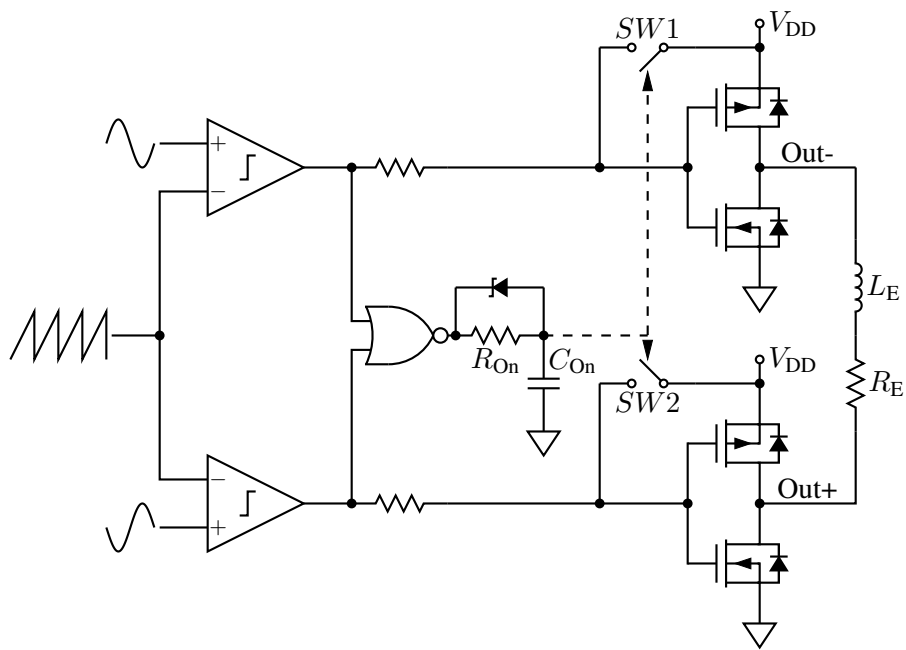
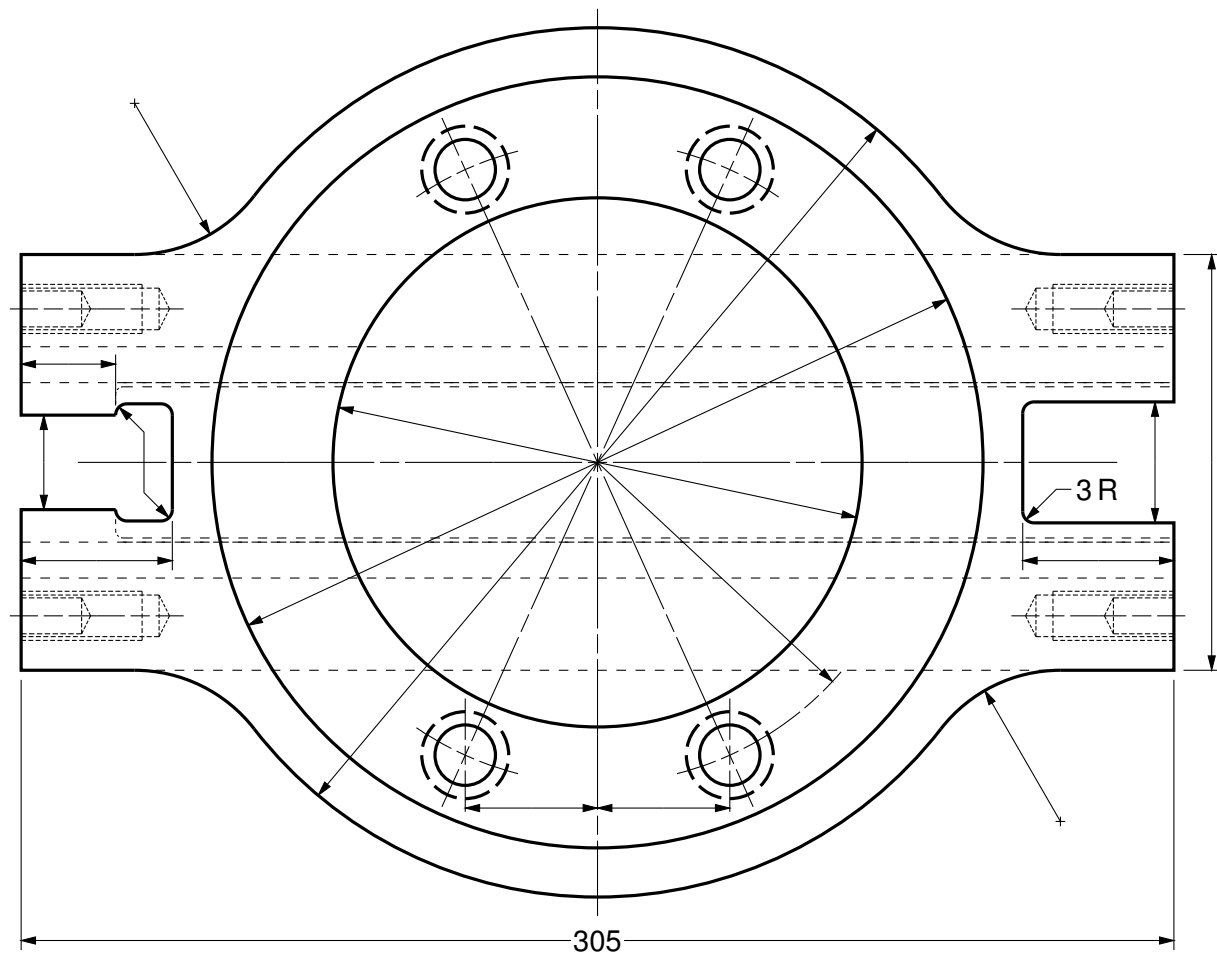


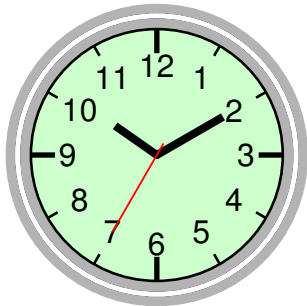
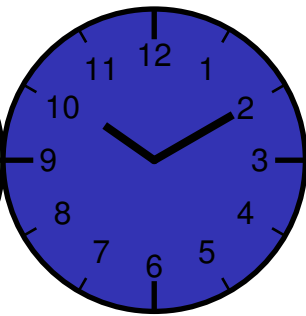
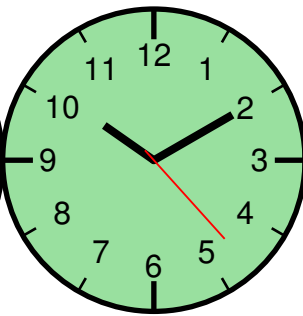
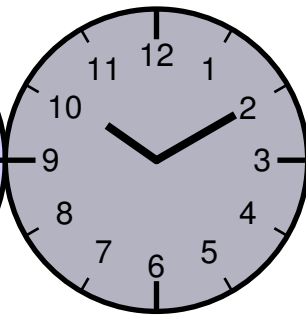
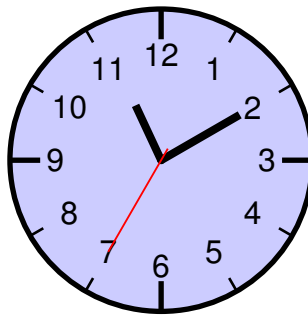
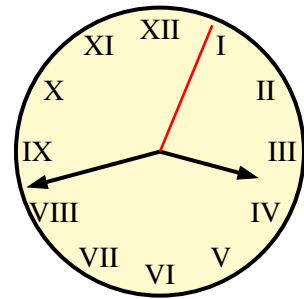
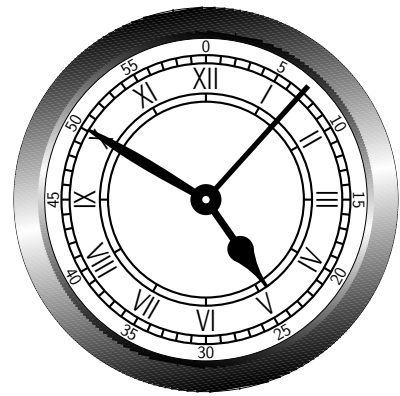
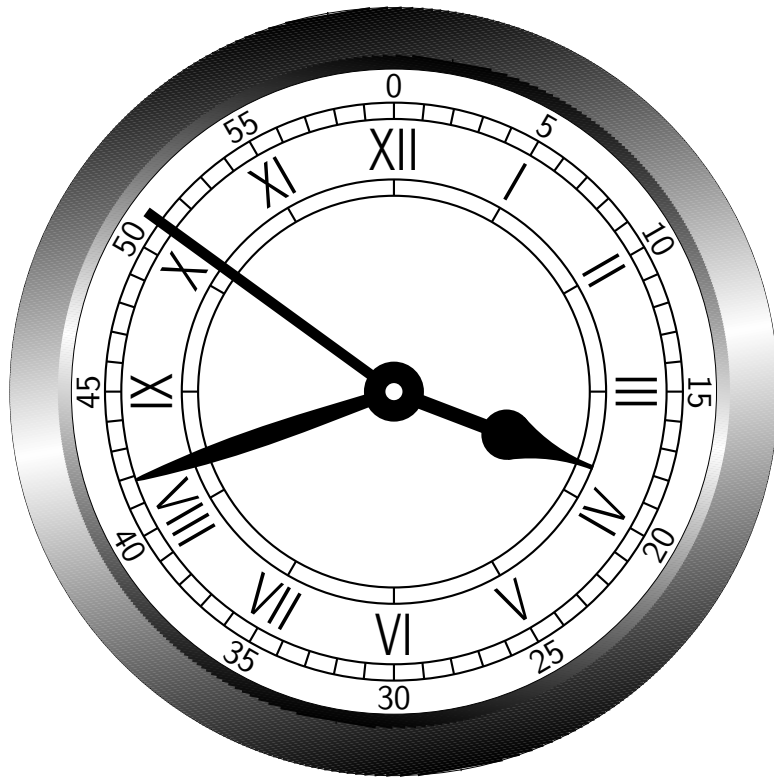
CSlight.m4



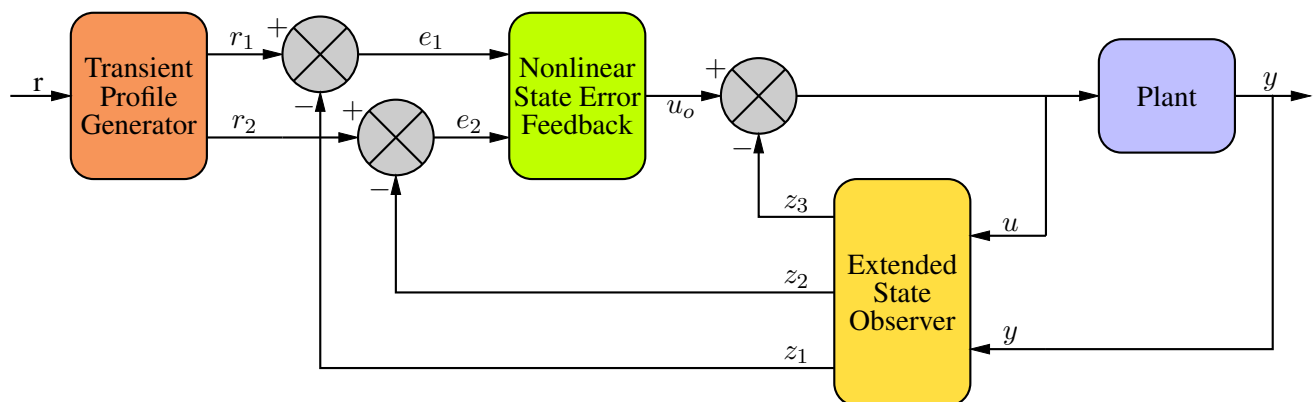
$$\begin{aligned}\dot{x}_1 &= 10(-x_1 + x_2) \\ \dot{x}_2 &= 28x_1 - x_2 - x_1x_3 \\ \dot{x}_3 &= -8x_3/3 + x_1x_2.\end{aligned}$$

Chaos.m4

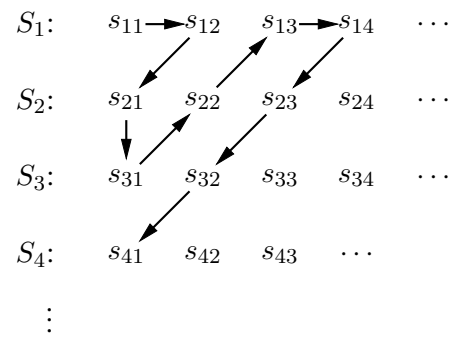




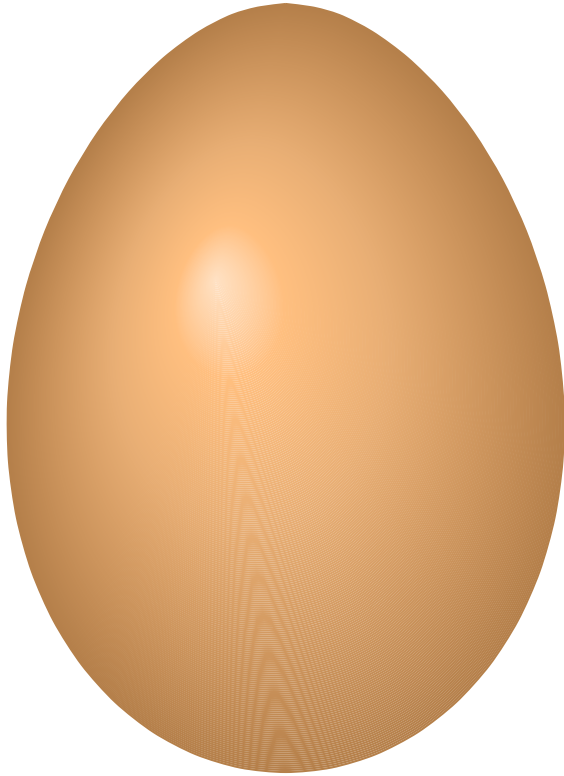
Clocks.m4



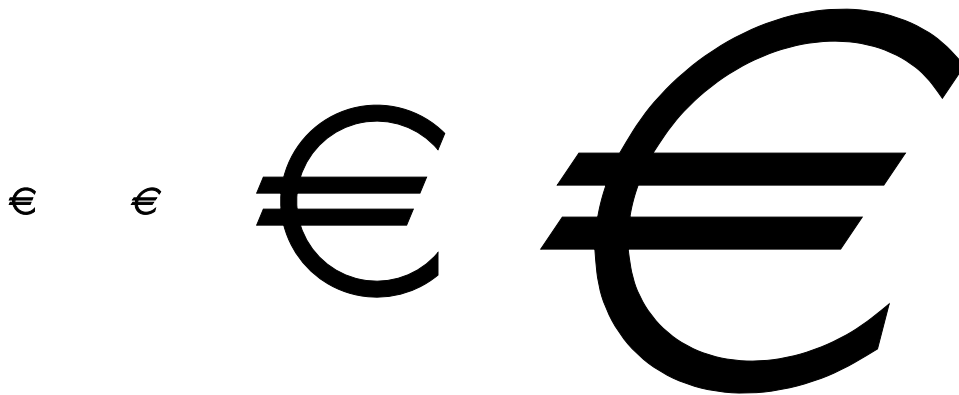
ControlLoop.m4



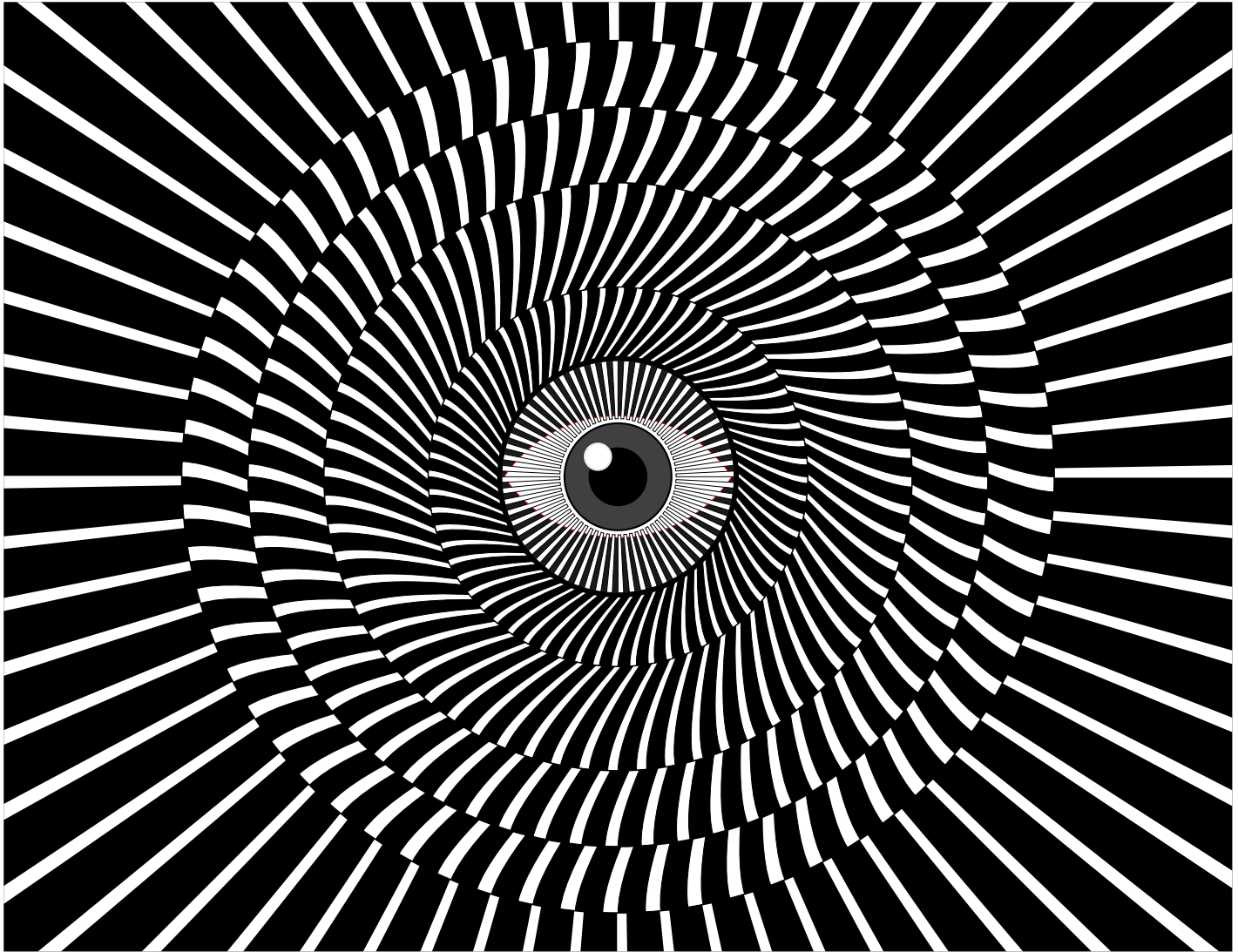
Counting.m4



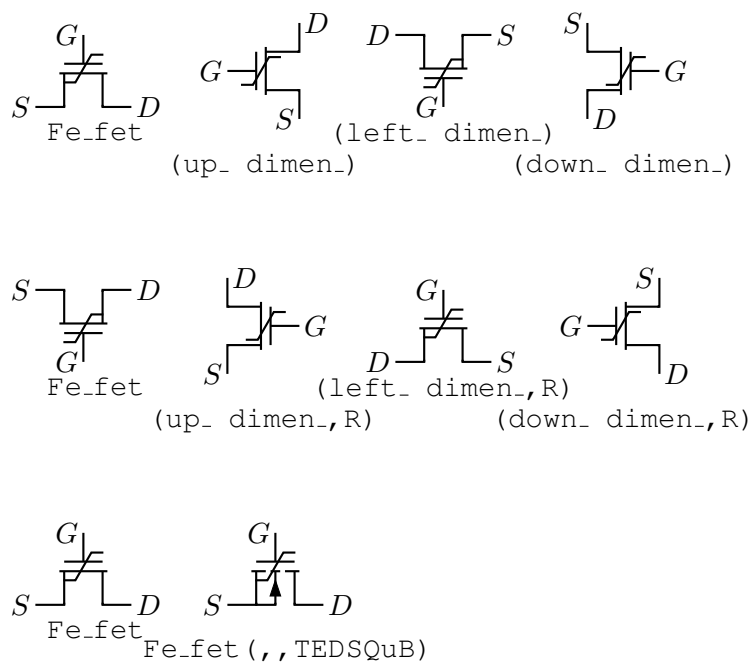
Egg.m4



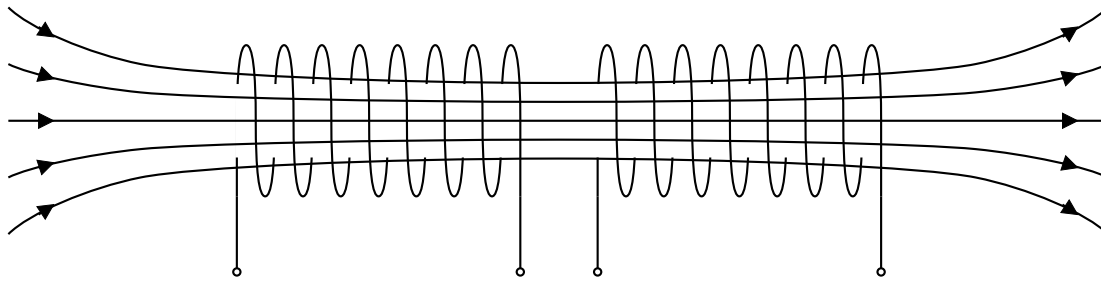
Euro.m4



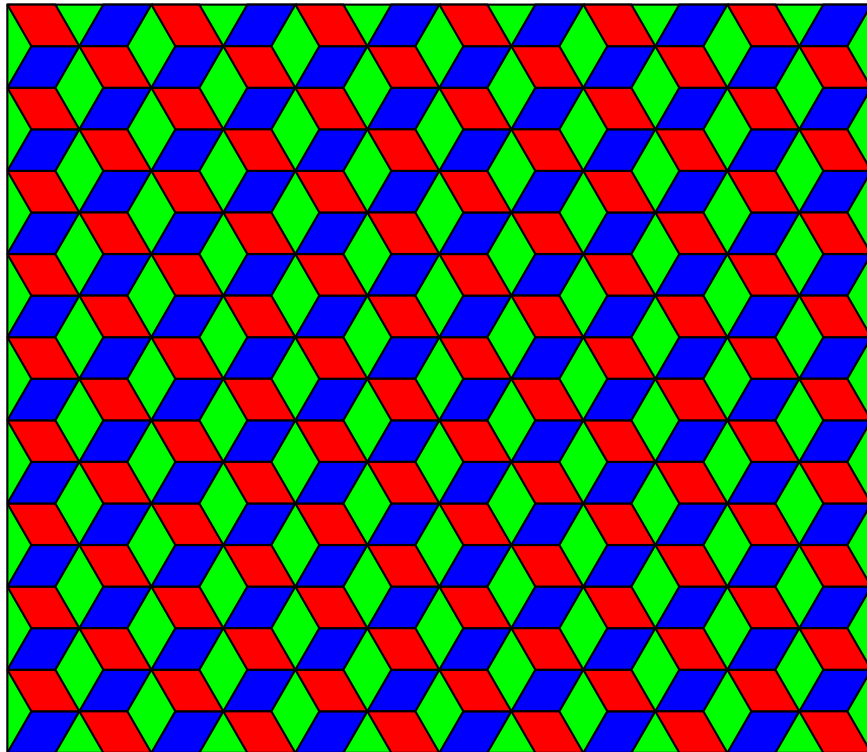
Eye.m4



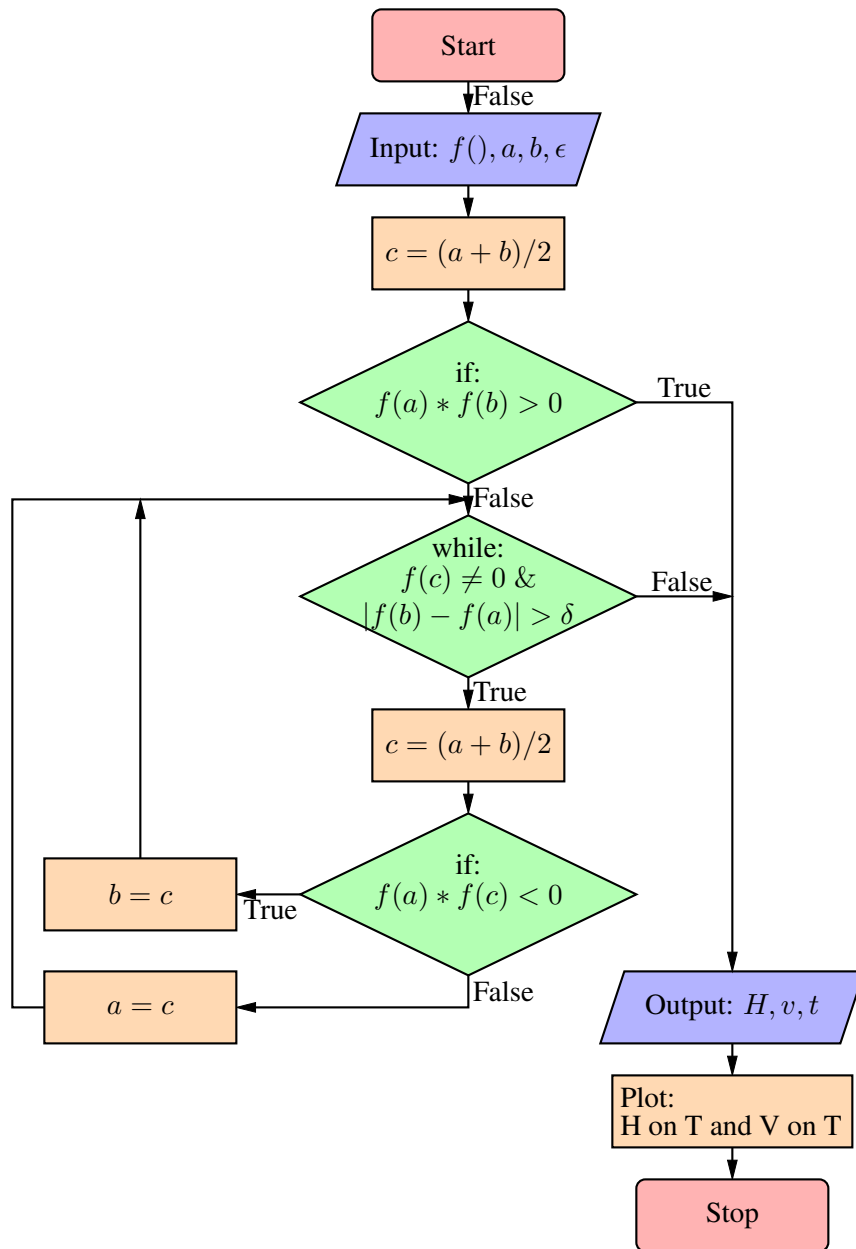
Fefets.m4



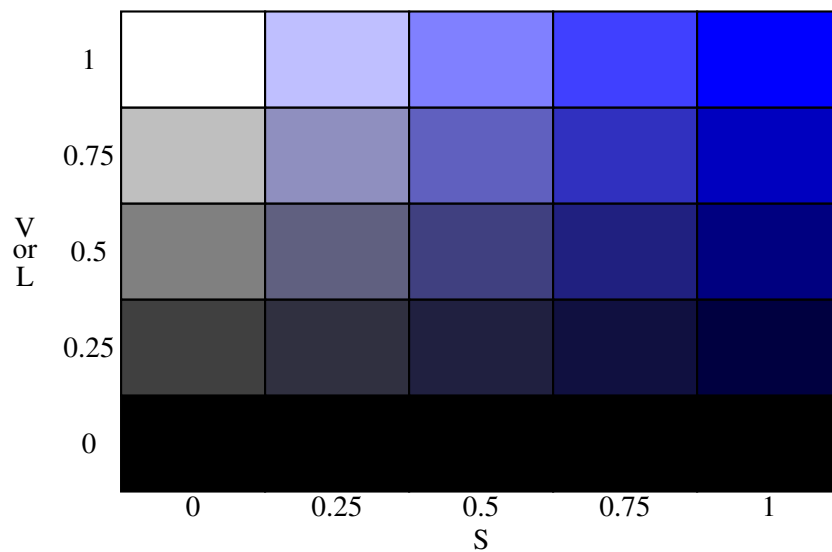
FieldLines.m4



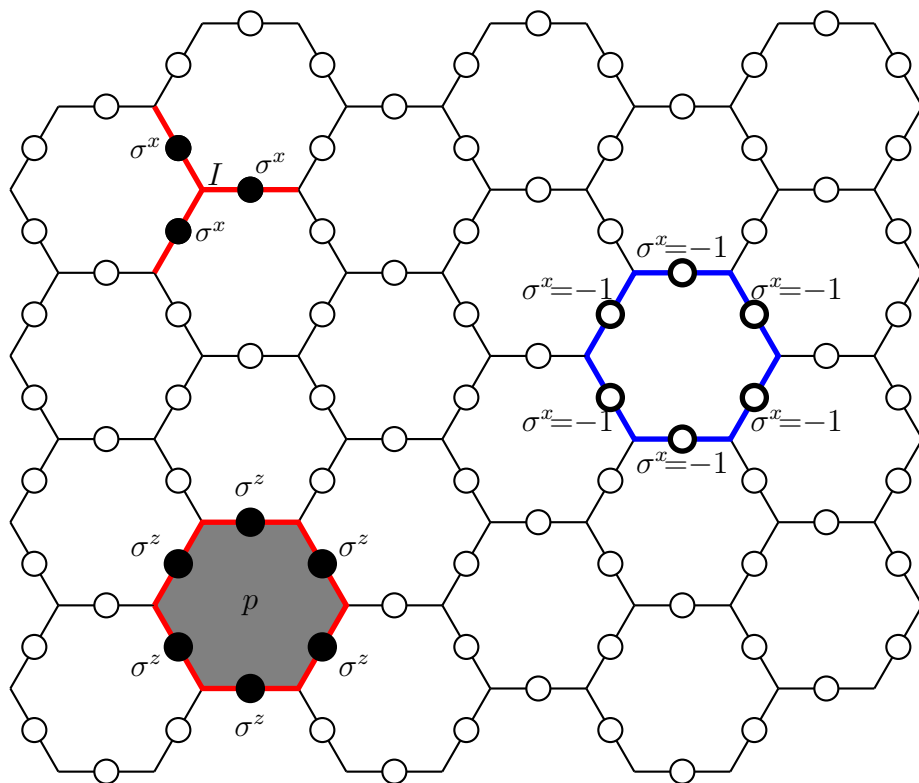
Floor.m4



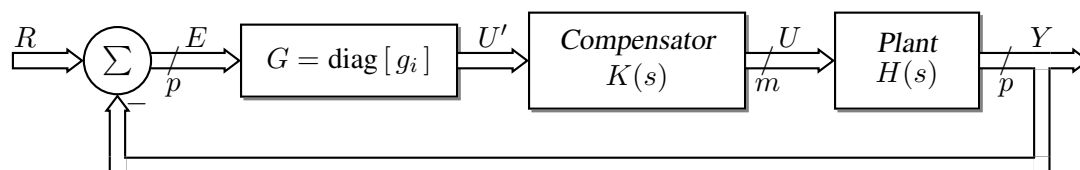
Flow2.m4



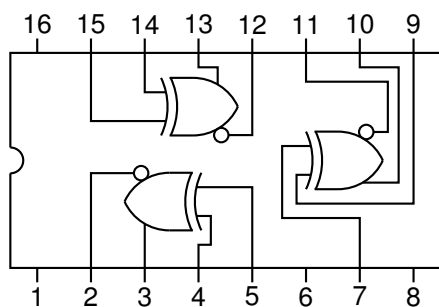
HSV.m4



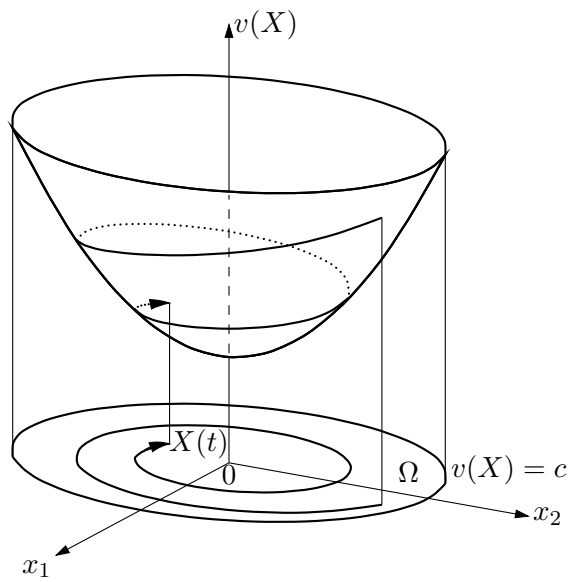
Hexagon.m4



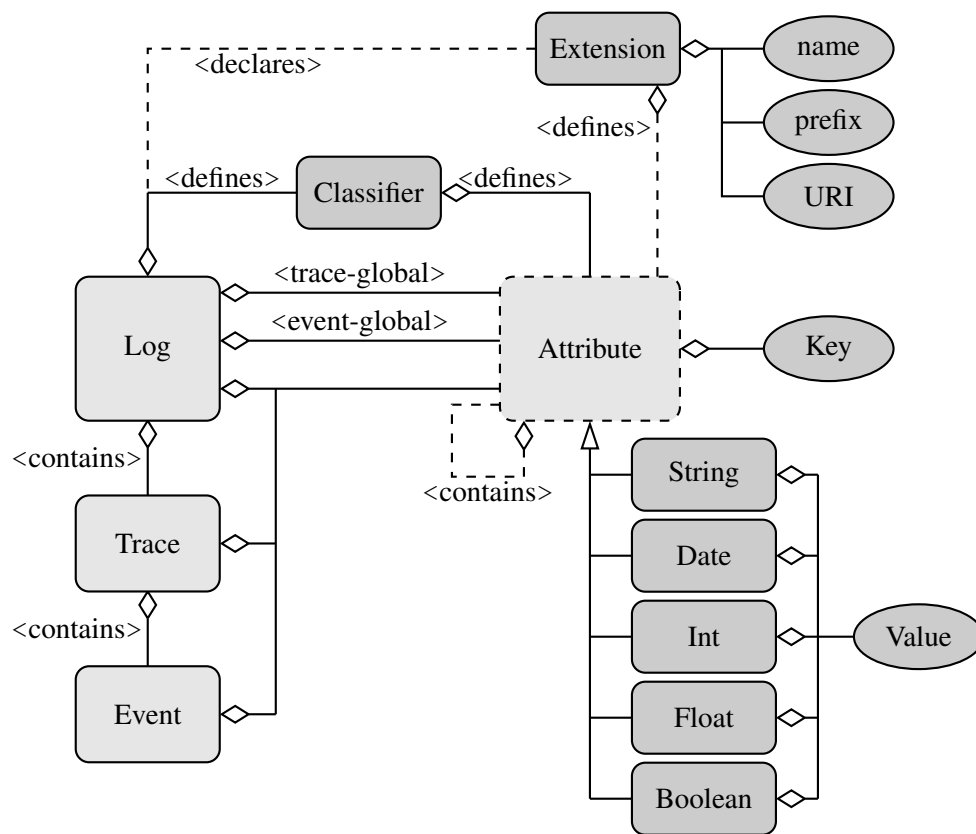
Highgain.m4



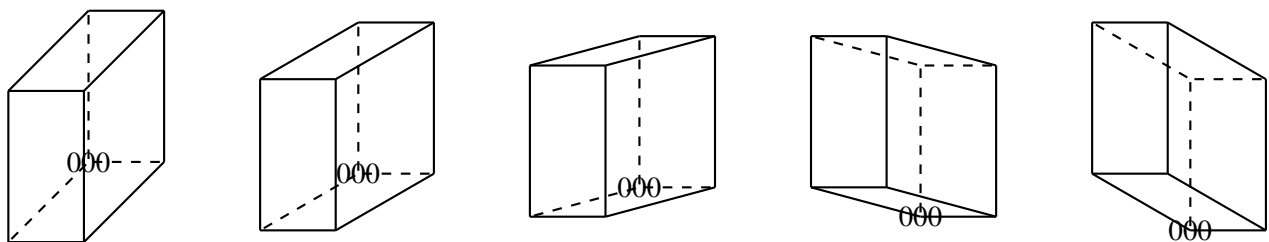
IC10107.m4



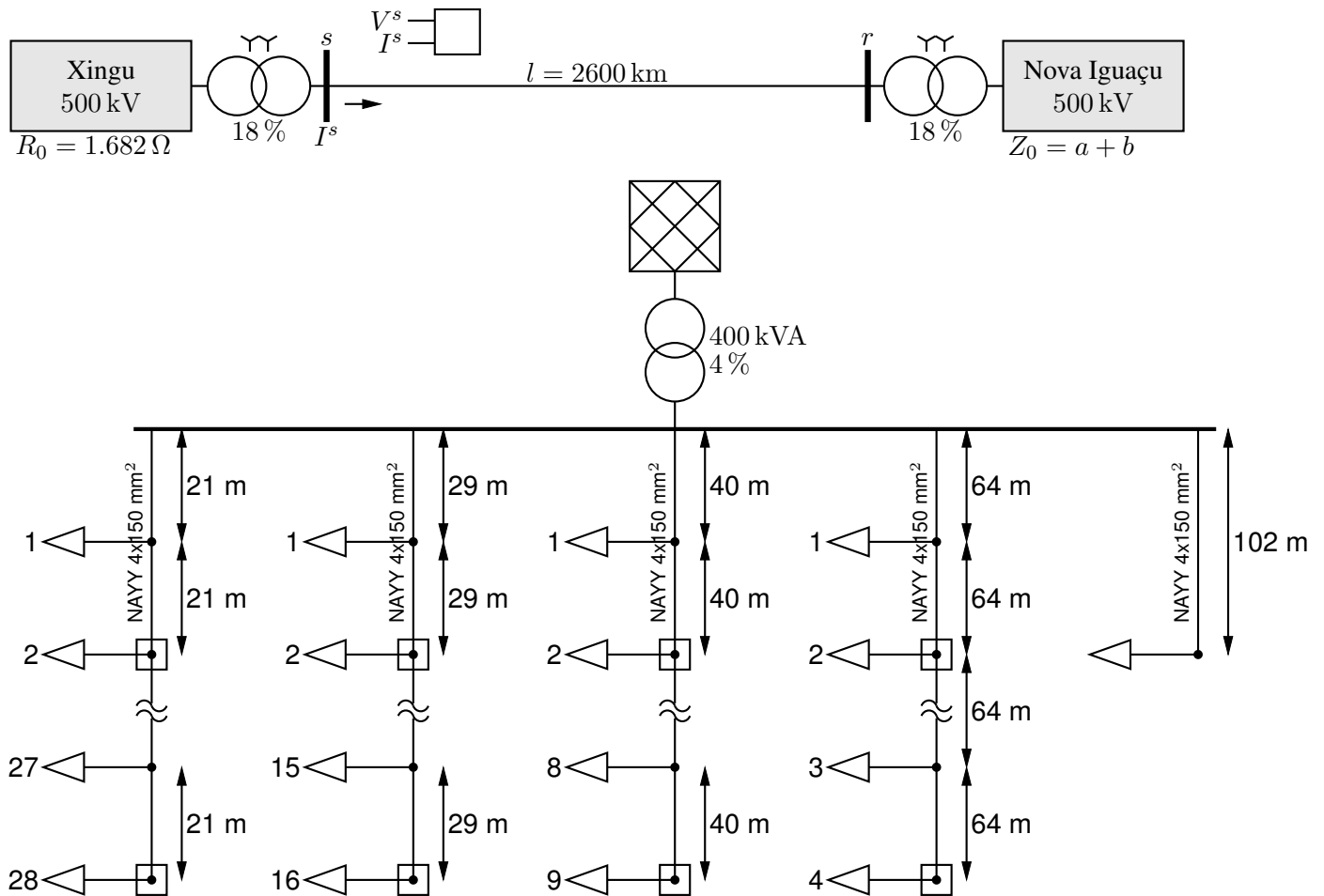
Lyap.m4



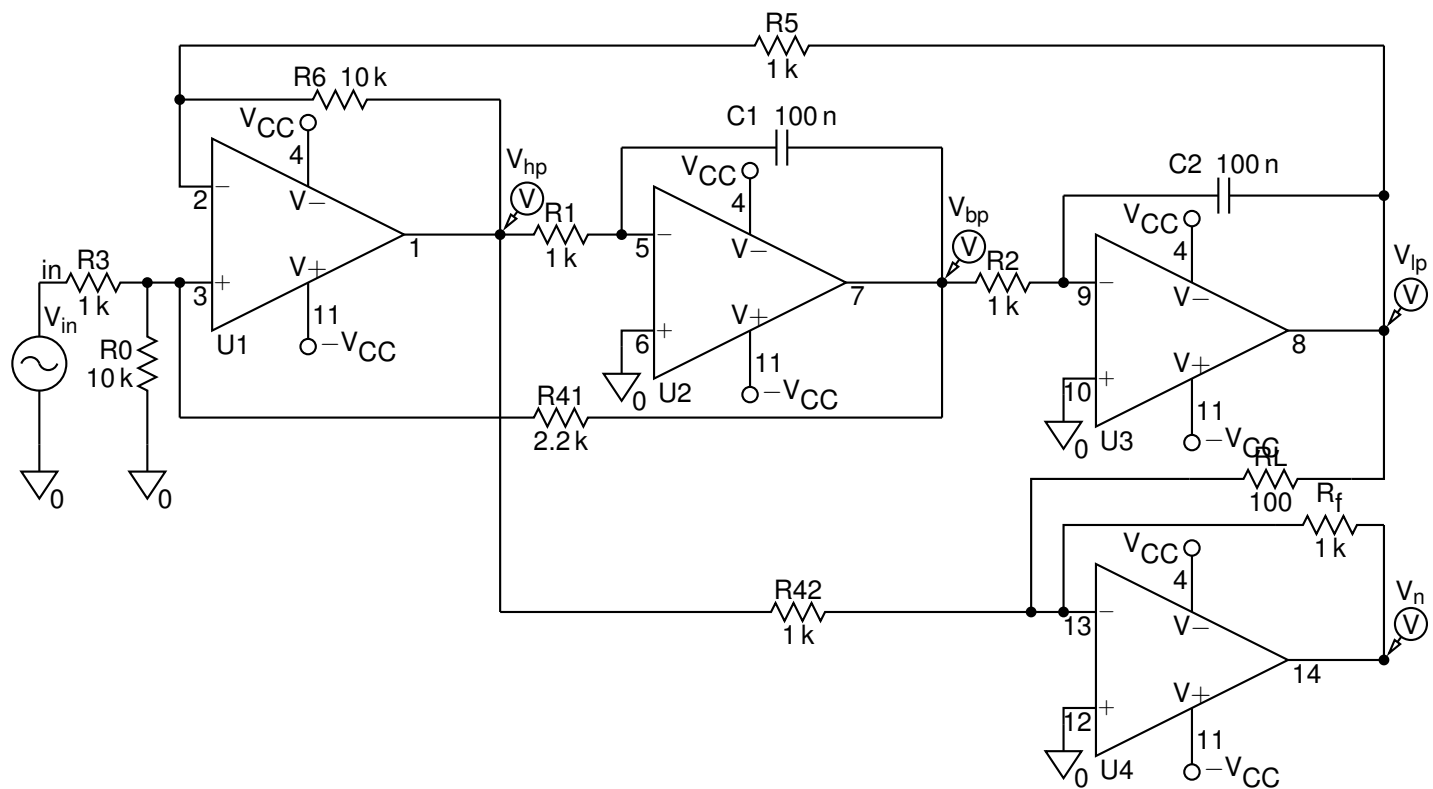
Metamodel.m4



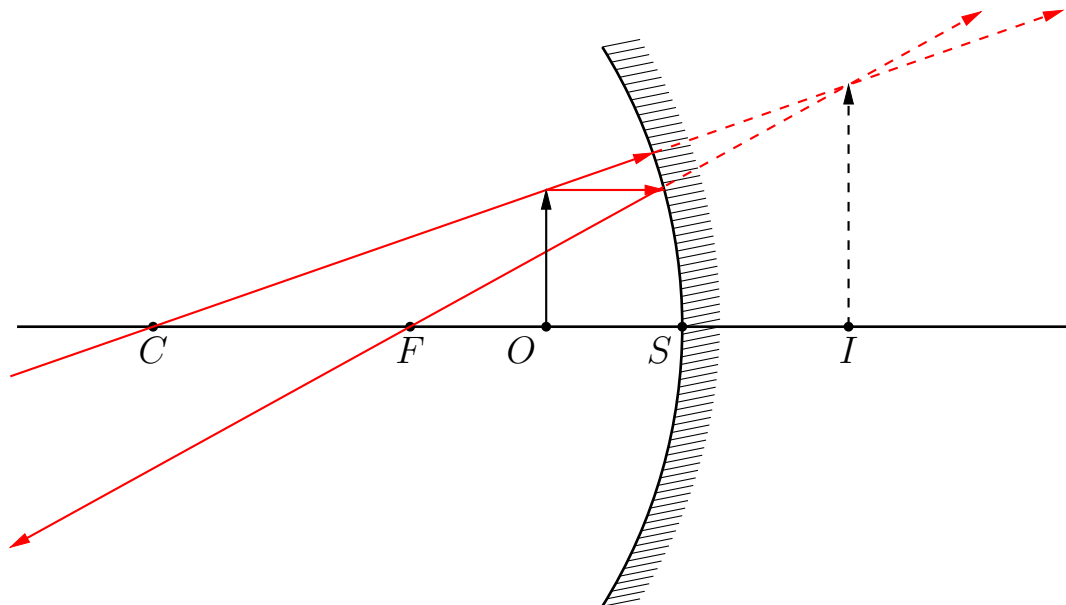
Obliq.m4



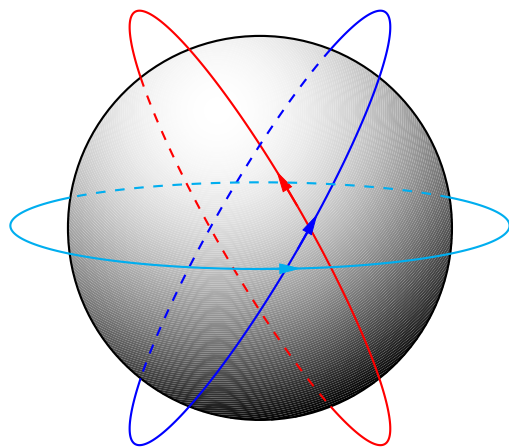
OneLine.m4



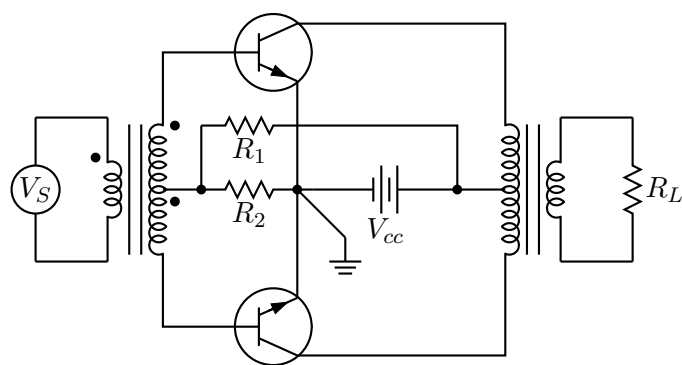
OpAmpFilter.m4



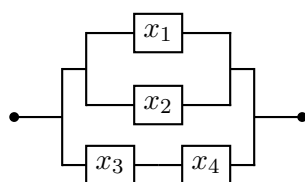
Optics.m4



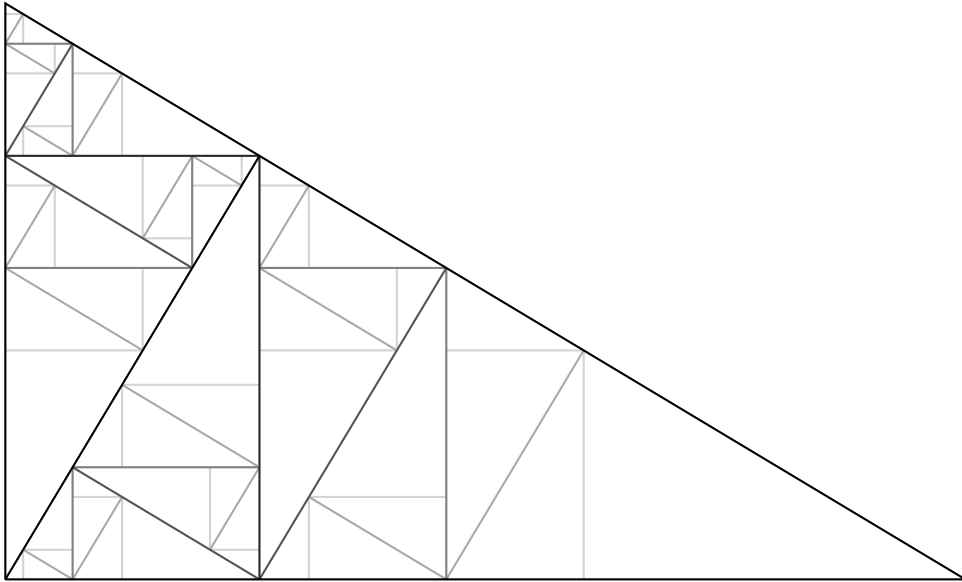
Orbits.m4



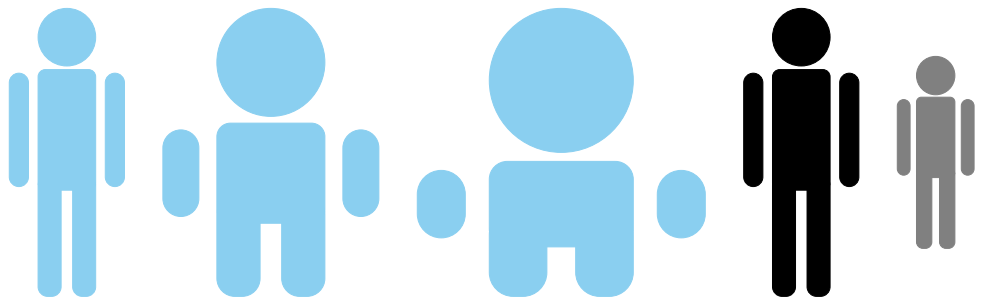
PPA.m4



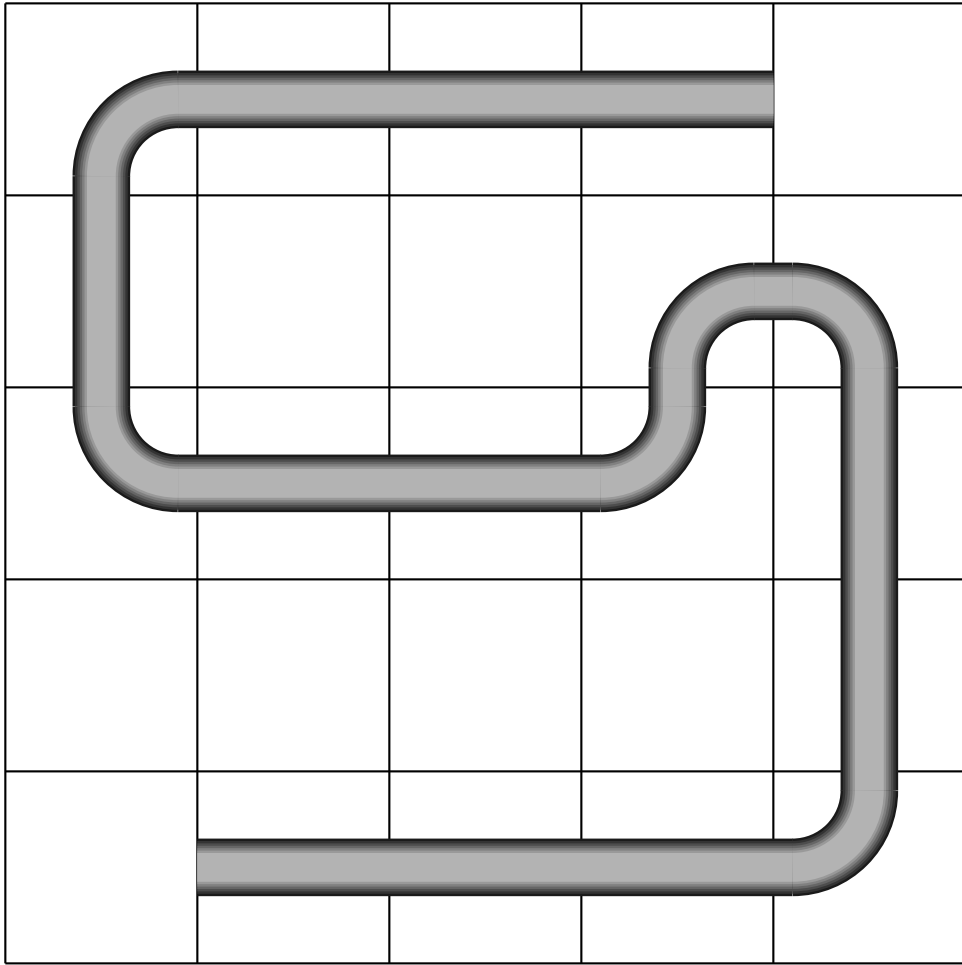
Parallel-series.m4



PerpTo.m4



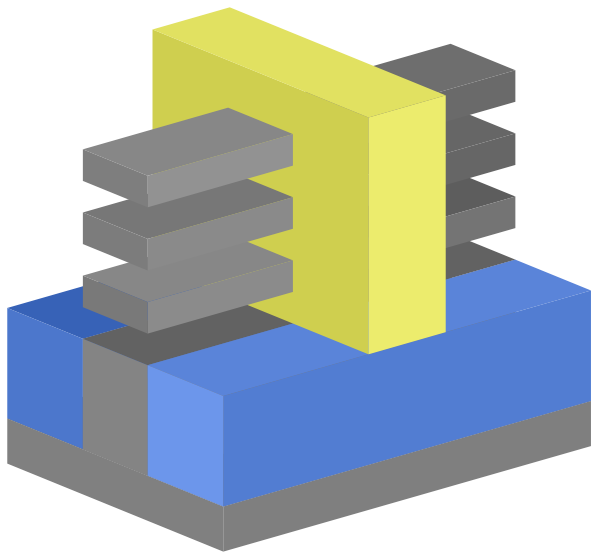
Person.m4

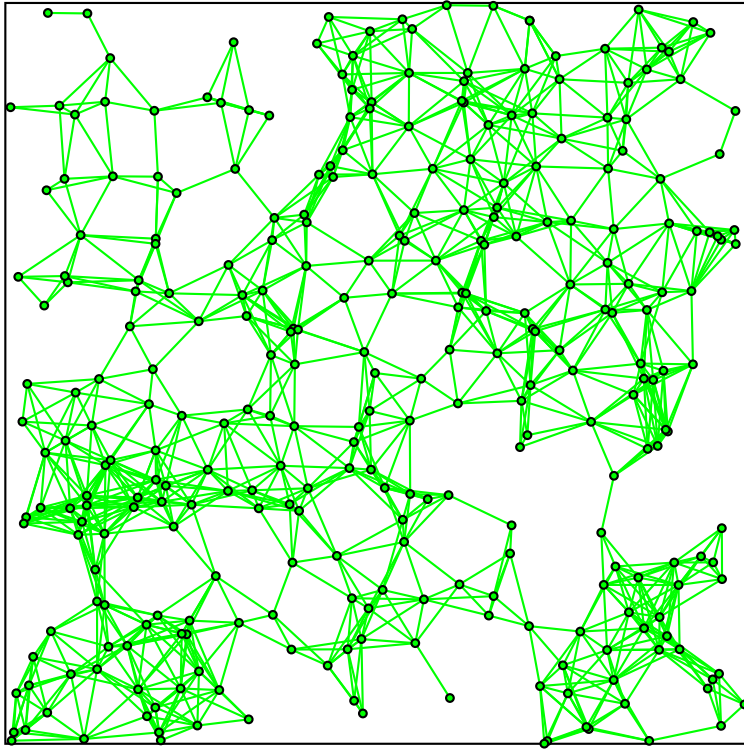


Pipe.m4

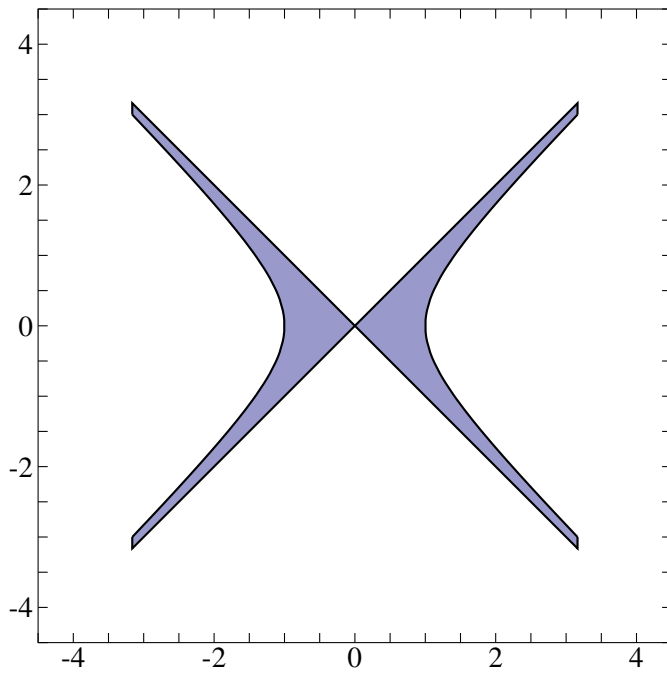


Planes.m4

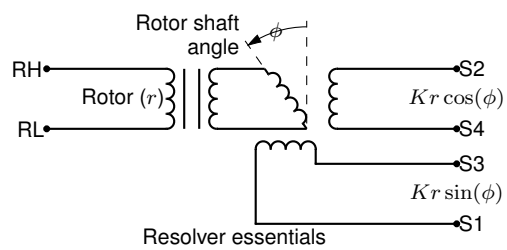




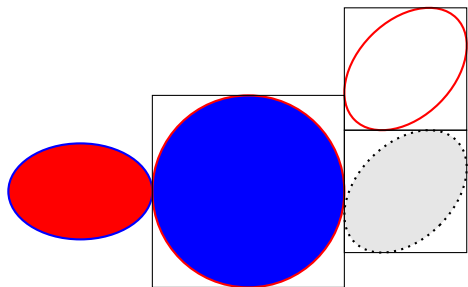
RandomNodes.m4



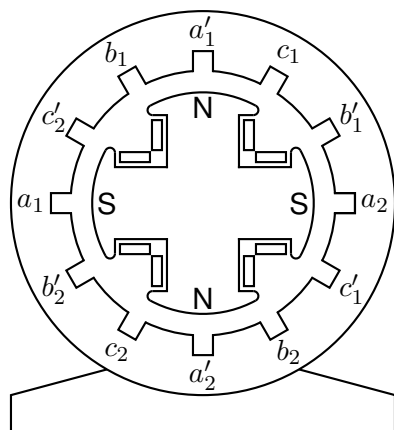
Region.m4



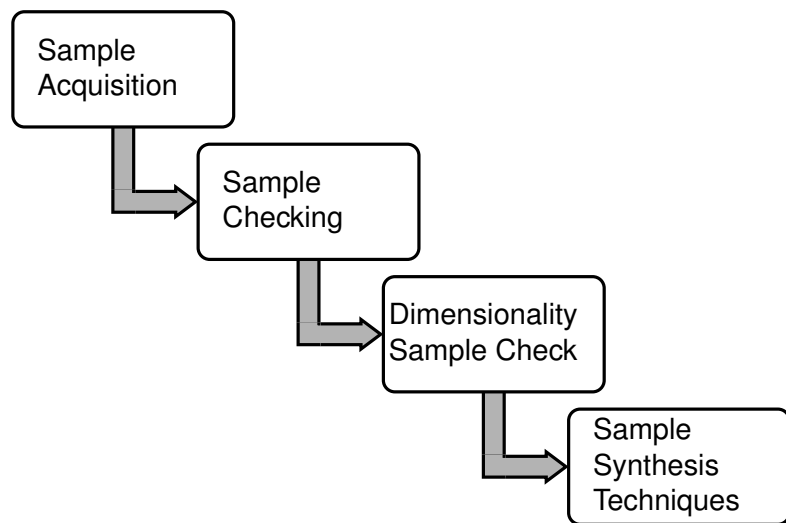
Resolver.m4



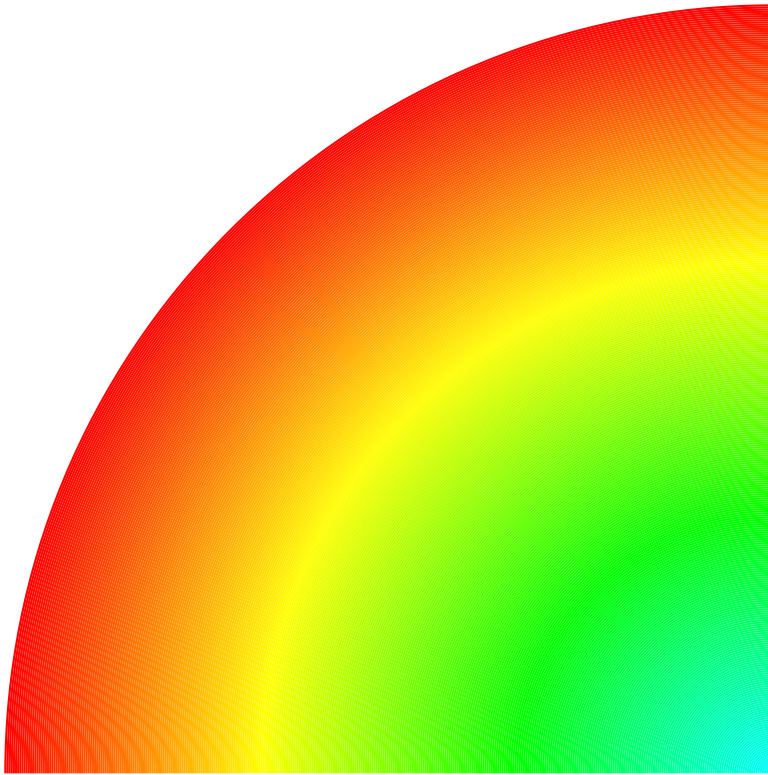
Rotellipse.m4



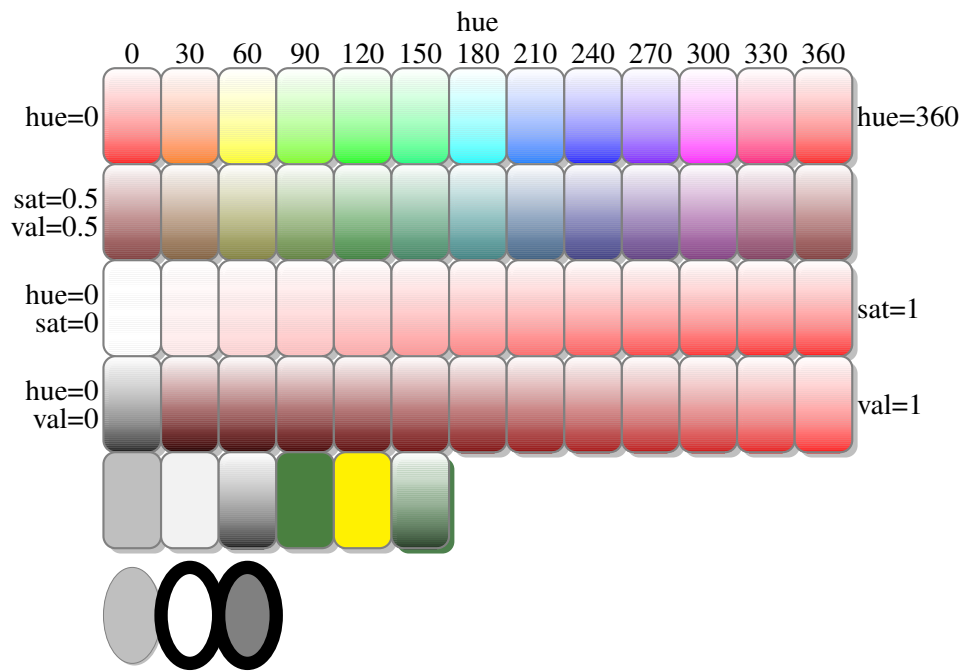
SPM.m4



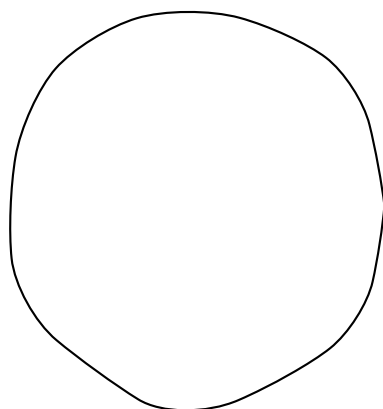
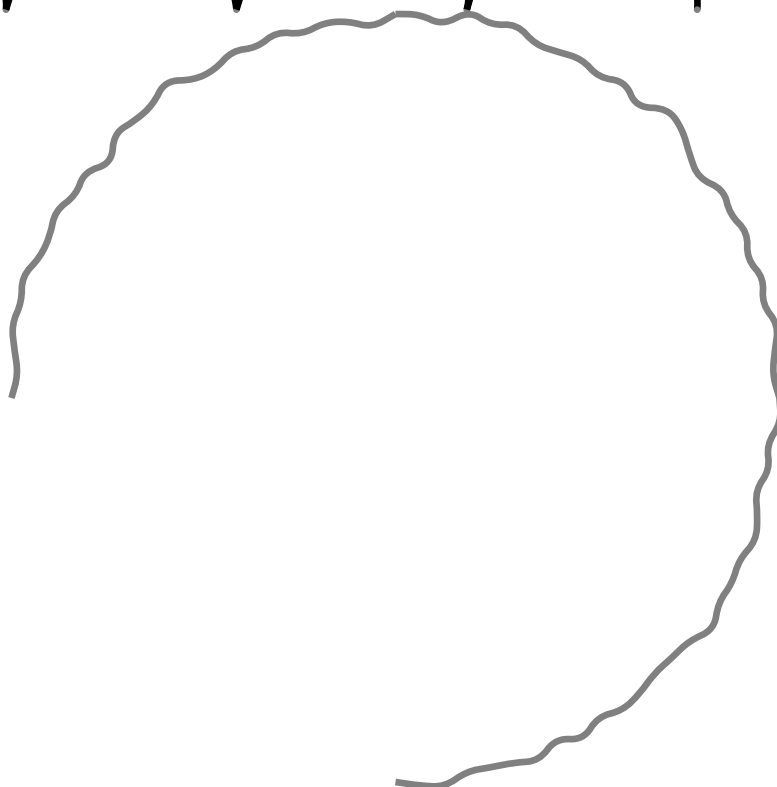
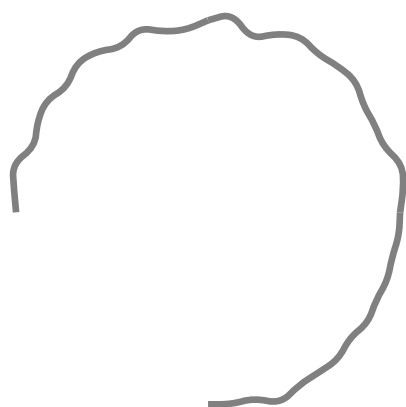
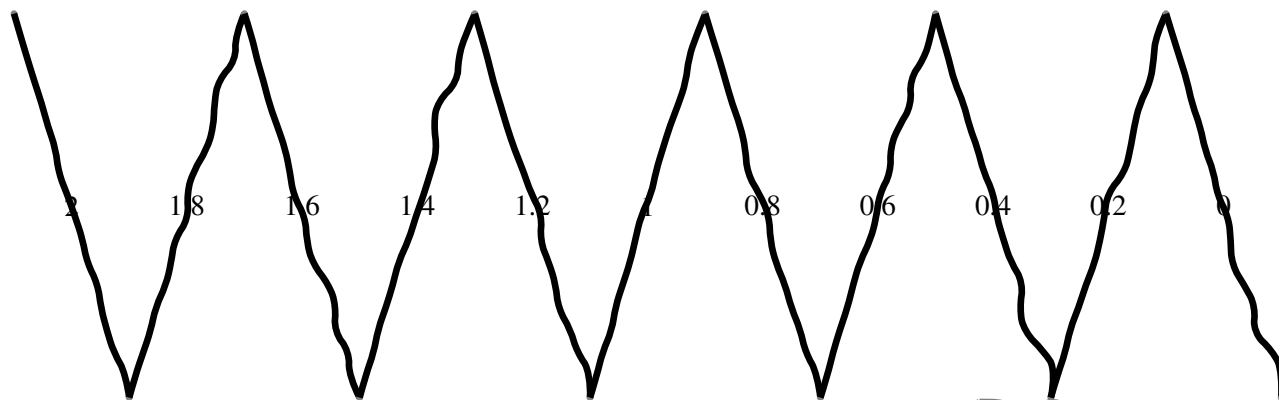
SampleFlow.m4



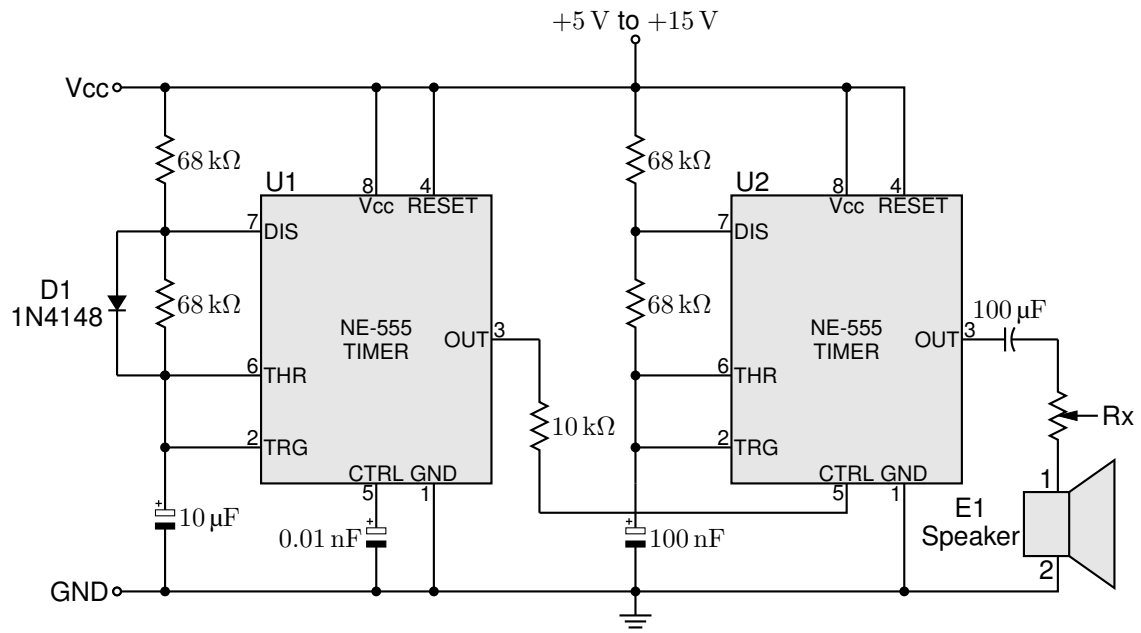
ShadeSector.m4



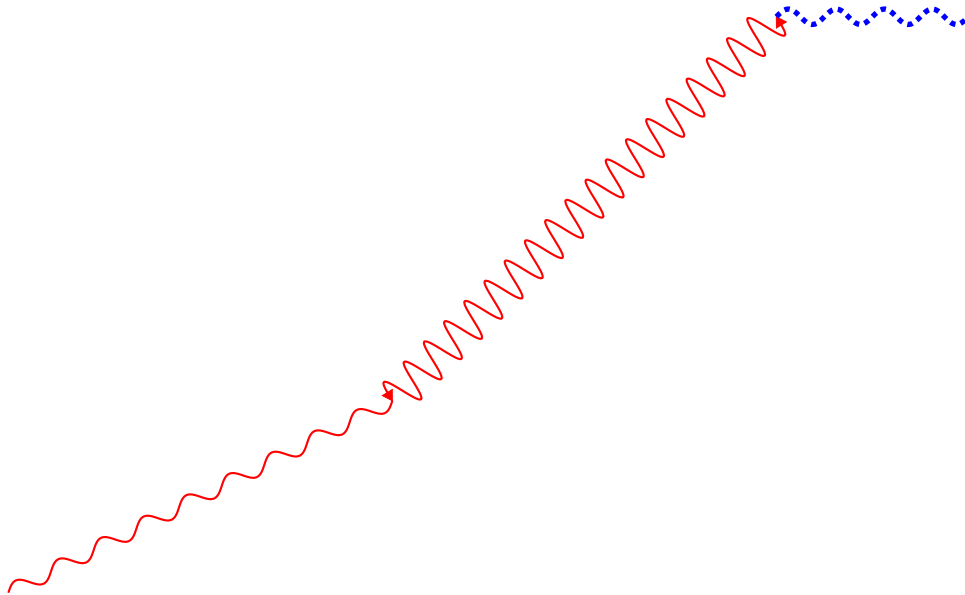
Shadow.m4



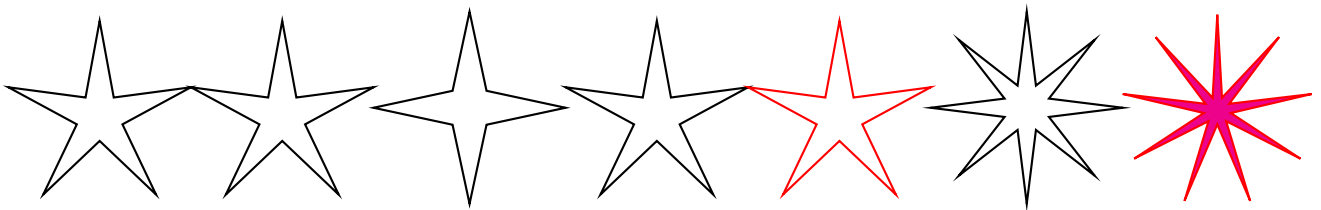
Shaky.m4



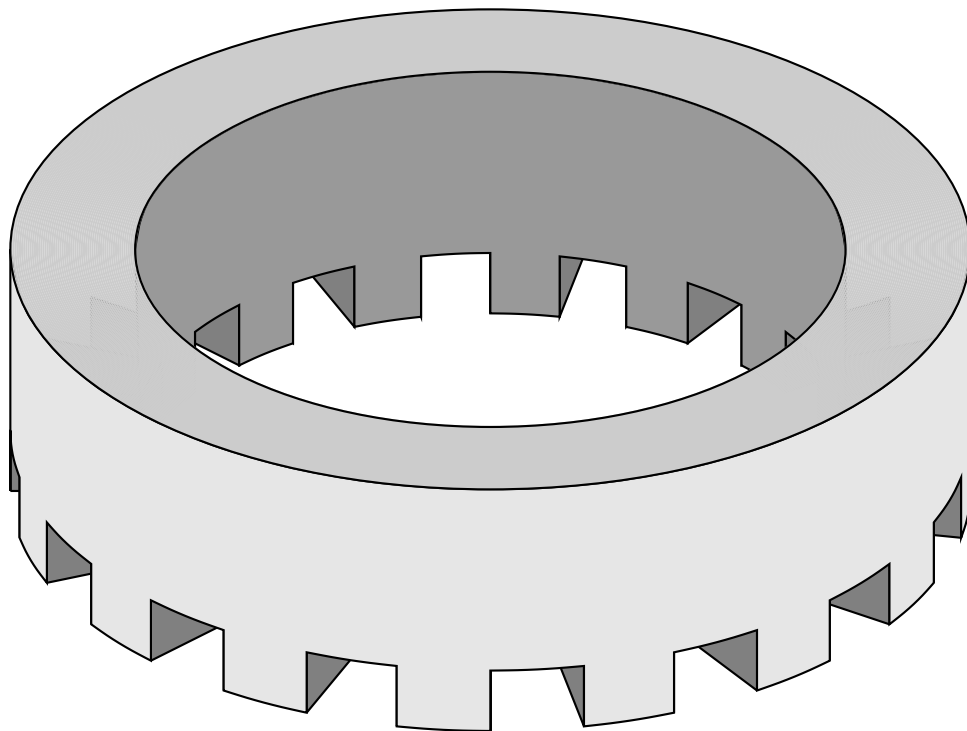
Spec555.m4



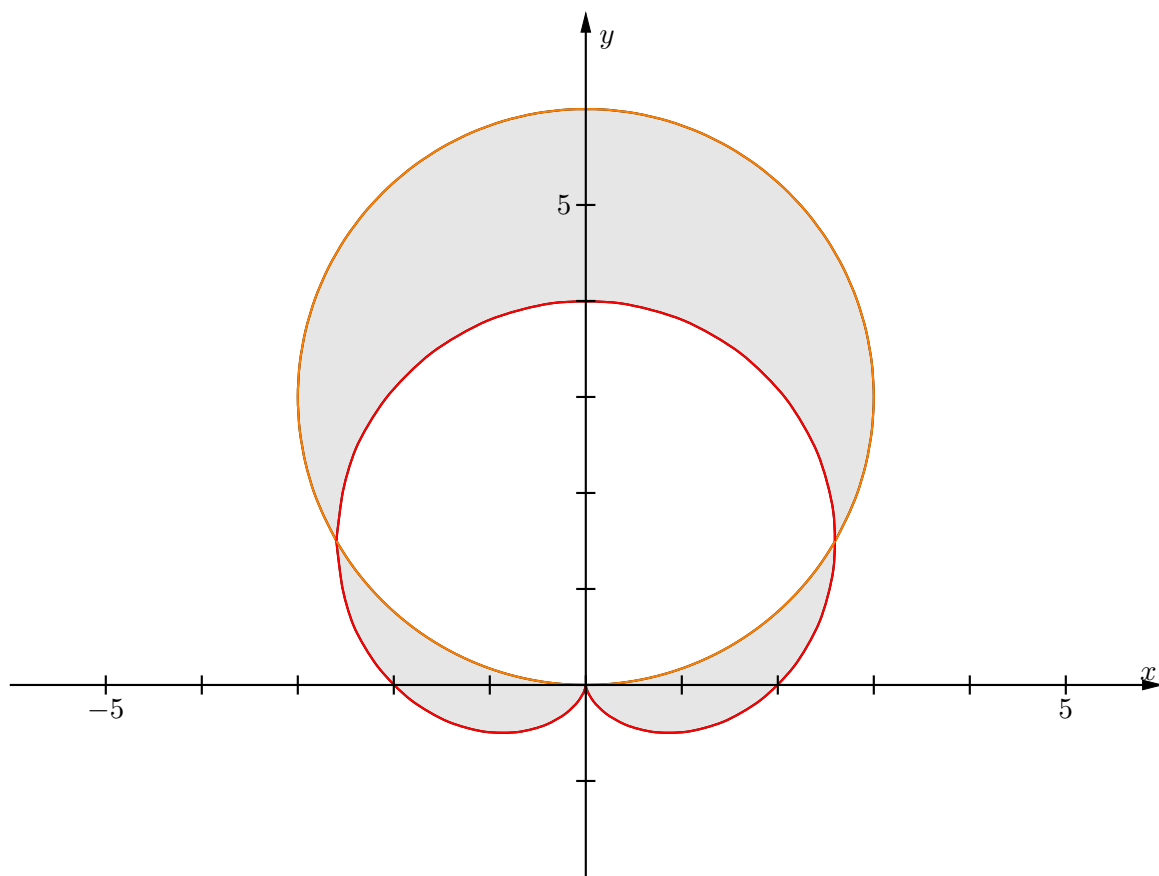
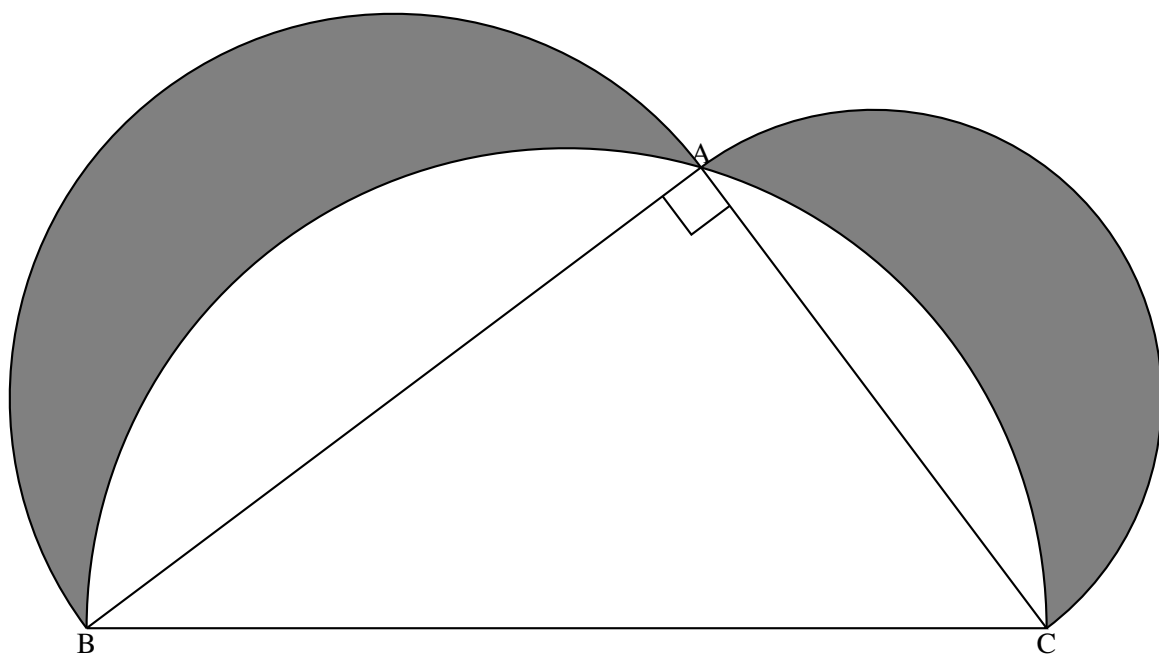
Squiggle.m4



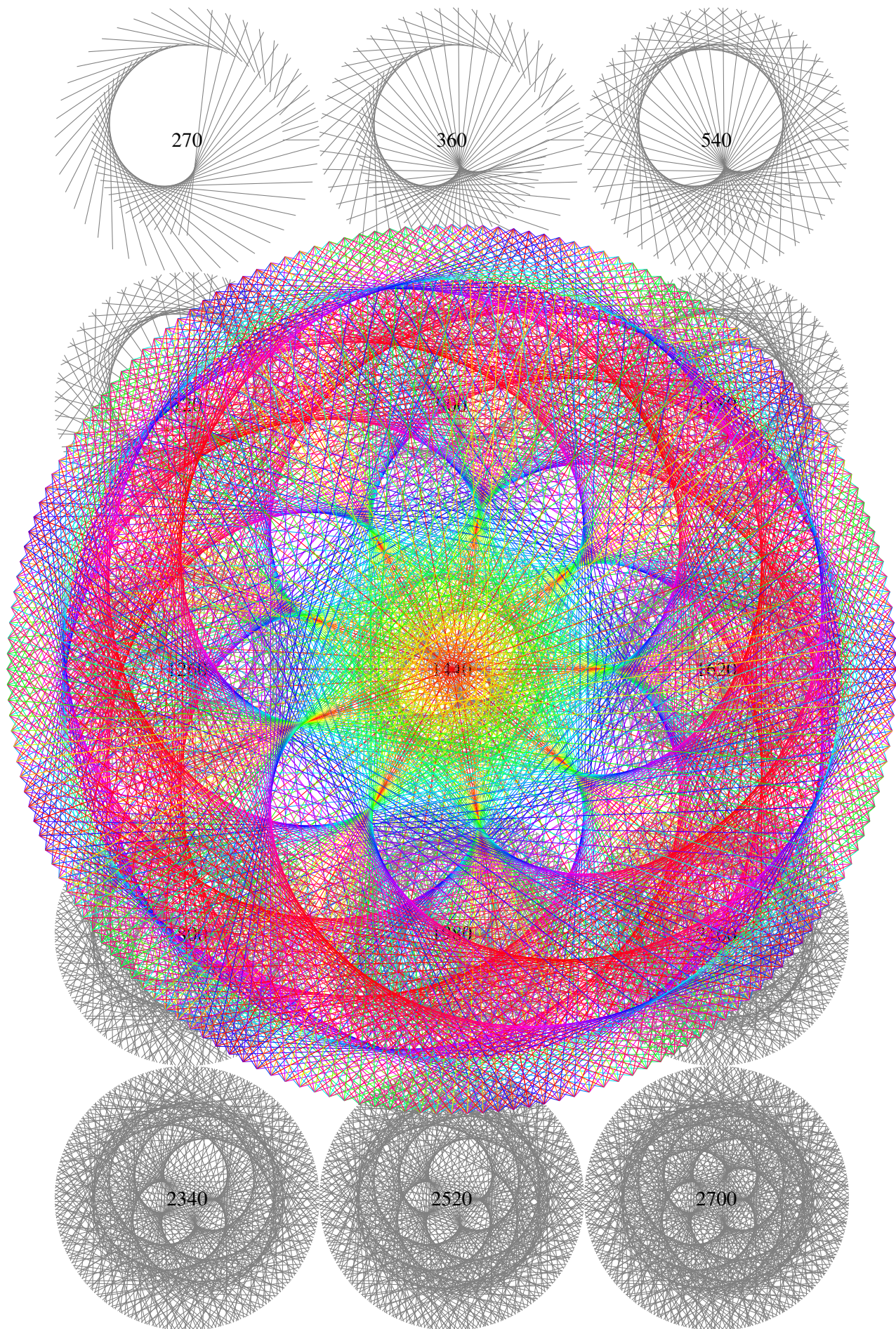
Star.m4

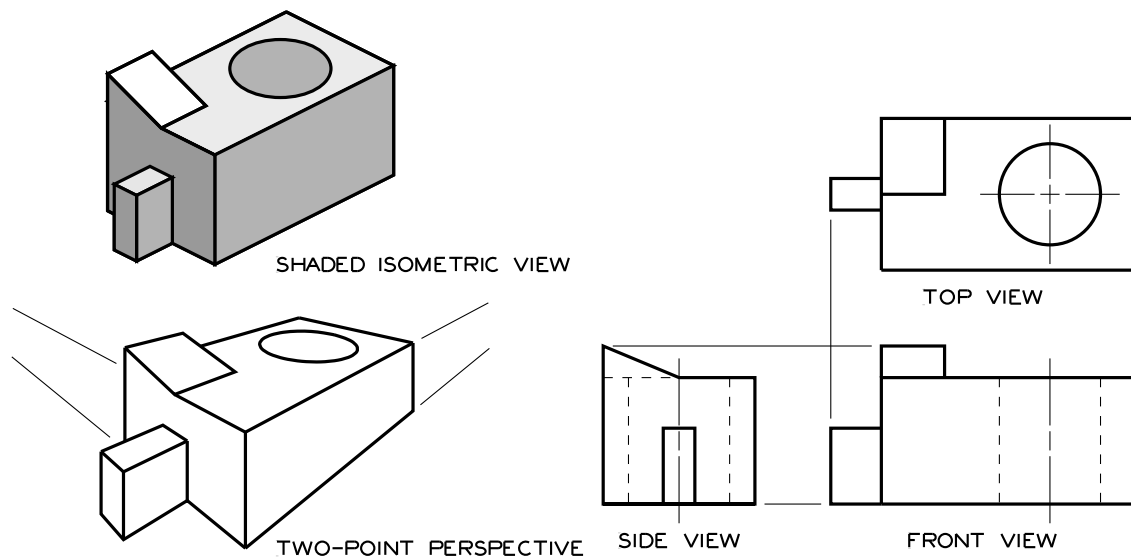


Stator.m4



TR_fill.m4

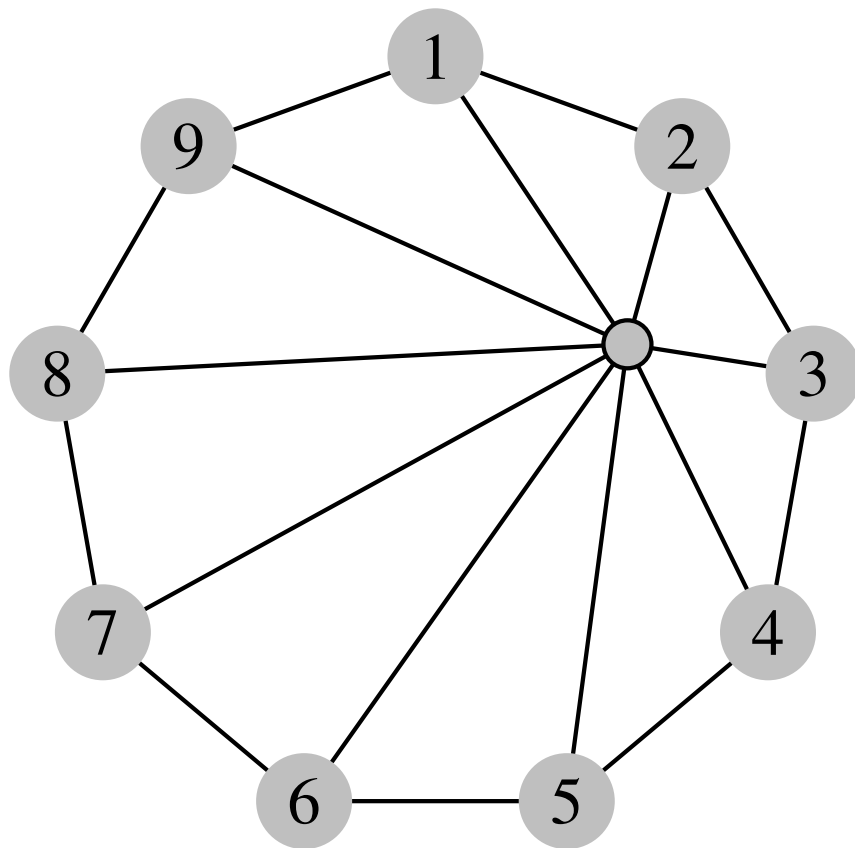




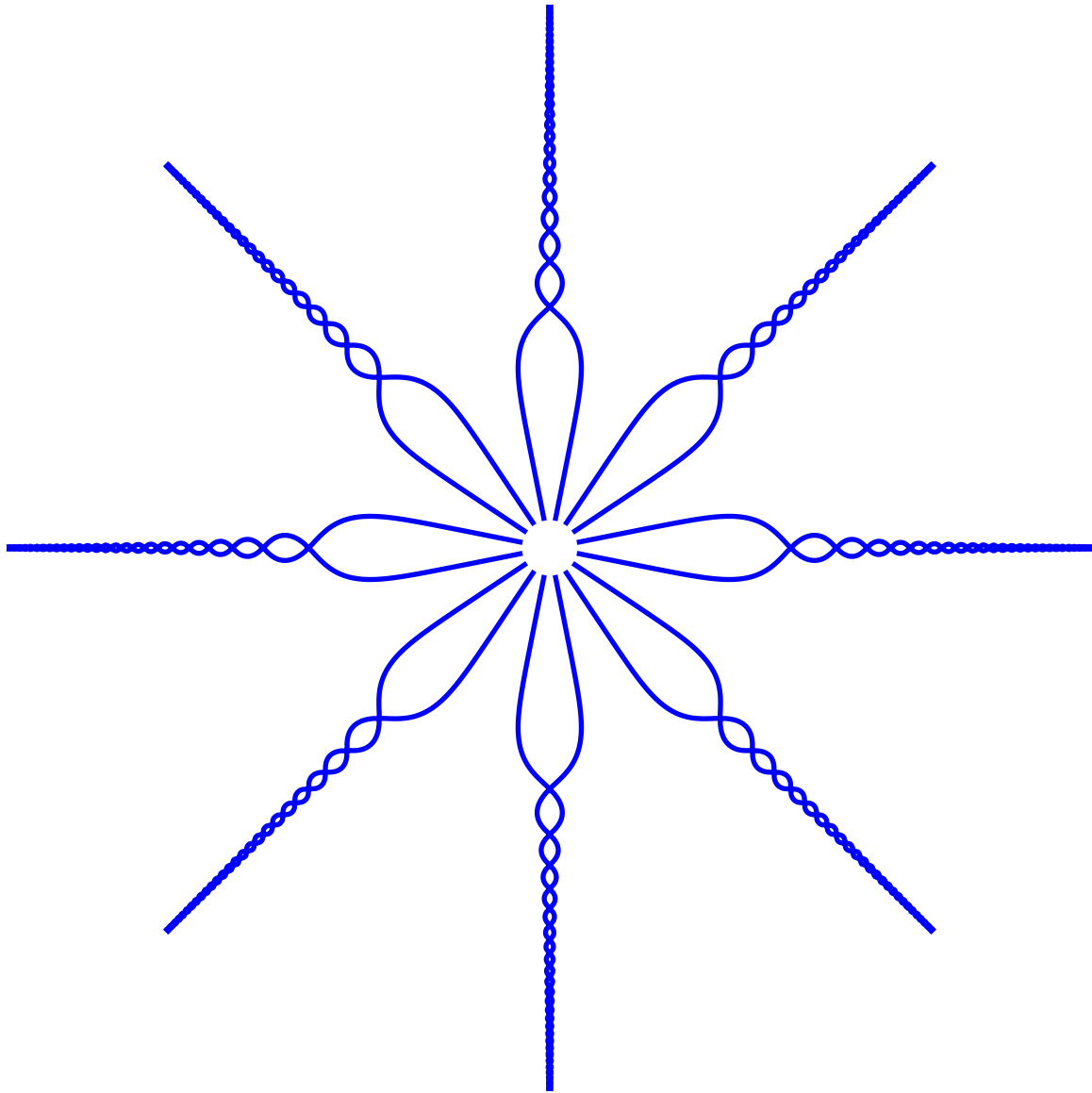
Views.m4

1	2	4	8	16	32	64	128
256	512	1024	2048	4096	8192	$2 \cdot 10^4$	$3 \cdot 10^4$
$7 \cdot 10^4$	$1 \cdot 10^5$	$3 \cdot 10^5$	$5 \cdot 10^5$	$1 \cdot 10^6$	$2 \cdot 10^6$	$4 \cdot 10^6$	$8 \cdot 10^6$
$2 \cdot 10^7$	$3 \cdot 10^7$	$7 \cdot 10^7$	$1 \cdot 10^8$	$3 \cdot 10^8$	$5 \cdot 10^8$	$1 \cdot 10^9$	$2 \cdot 10^9$
$4 \cdot 10^9$	$9 \cdot 10^9$	$2 \cdot 10^{10}$	$3 \cdot 10^{10}$	$7 \cdot 10^{10}$	$1 \cdot 10^{11}$	$3 \cdot 10^{11}$	$5 \cdot 10^{11}$
$1 \cdot 10^{12}$	$2 \cdot 10^{12}$	$4 \cdot 10^{12}$	$9 \cdot 10^{12}$	$2 \cdot 10^{13}$	$4 \cdot 10^{13}$	$7 \cdot 10^{13}$	$1 \cdot 10^{14}$
$3 \cdot 10^{14}$	$6 \cdot 10^{14}$	$1 \cdot 10^{15}$	$2 \cdot 10^{15}$	$5 \cdot 10^{15}$	$9 \cdot 10^{15}$	$2 \cdot 10^{16}$	$4 \cdot 10^{16}$
$7 \cdot 10^{16}$	$1 \cdot 10^{17}$	$3 \cdot 10^{17}$	$6 \cdot 10^{17}$	$1 \cdot 10^{18}$	$2 \cdot 10^{18}$	$5 \cdot 10^{18}$	$9 \cdot 10^{18}$

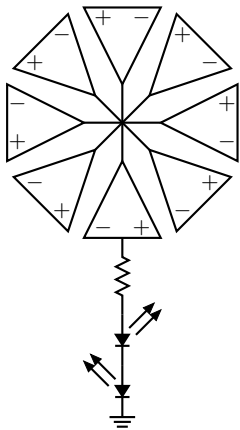
Wheat.m4



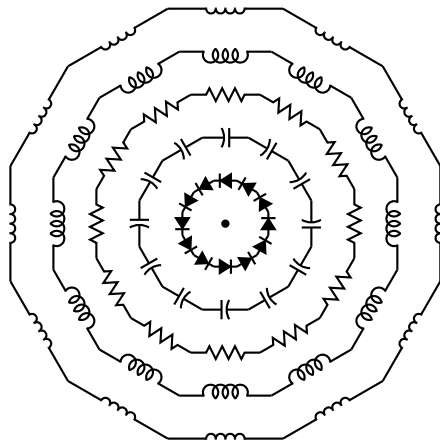
Wheel.m4

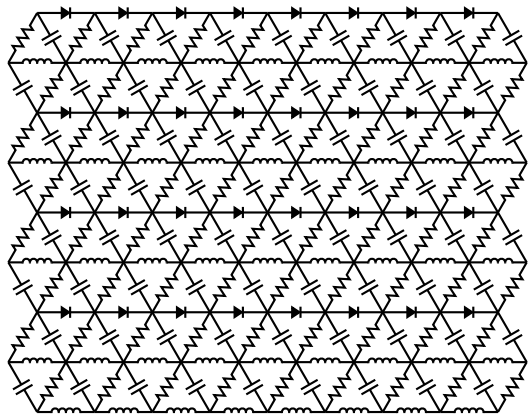


Zcos.m4



ex02.m4





ex17.m4

