

The Computational Sprinting Game

Songchun Fan* Seyed Majid Zahedi* Benjamin C. Lee

Duke University

{songchun.fan, seyedmajid.zahedi, benjamin.c.lee}@duke.edu

Abstract

Computational sprinting is a class of mechanisms that boost performance but dissipate additional power. We describe a sprinting architecture in which many, independent chip multiprocessors share a power supply and sprints are constrained by the chips' thermal limits and the rack's power limits. Moreover, we present the computational sprinting game, a multi-agent perspective on managing sprints. Strategic agents decide whether to sprint based on application phases and system conditions. The game produces an equilibrium that improves task throughput for data analytics workloads by 4-6 \times over prior greedy heuristics and performs within 90% of an upper bound on throughput from a globally optimized policy.

1. Introduction

Modern datacenters oversubscribe their power supplies to enhance performance and efficiency. A conservative datacenter that deploys servers according to their expected power draw will under-utilize provisioned power, operate power supplies at sub-optimal loads, and forgo opportunities for higher performance. In contrast, efficient datacenters deploy more servers than it can power fully and rely on varying computational load across servers to modulate demand for power [15]. Such a strategy requires responsive mechanisms for delivering power to the computation that needs it most.

Computational sprinting is a class of mechanisms that supply additional power for short durations to enhance performance. In chip multiprocessors, for example, sprints activate additional cores and boost their voltage and frequency. Although originally proposed for mobile systems [37, 38], sprinting has found numerous applications in datacenter sys-

tems. It can accelerate computation for complex tasks or accommodate transient activity spikes [41, 49].

The system architecture determines sprint duration and frequency. Sprinting multiprocessors generate extra heat, absorbed by thermal packages and phase change materials [37, 41], and require time to release this heat between sprints. At scale, uncoordinated multiprocessors that sprint simultaneously could overwhelm a rack or cluster's power supply. Uninterruptible power supplies reduce the risk of tripping circuit breakers and triggering power emergencies. But the system requires time to recharge batteries between sprints. Given these physical constraints in chip multiprocessors and the datacenter rack, sprinters require recovery time. Thus, sprinting mechanisms couple performance opportunities with management constraints.

We face fundamental management questions when servers sprint independently but share a power supply – which processors should sprint and when should they sprint? Each processor's workload derives extra performance from sprinting that depends on its computational phase. Ideally, sprinters would be the processors that benefit most from boosted capability at any given time. Moreover, the number of sprinters would be small enough to avoid power emergencies, which constrain future sprints. Policies that achieve these goals are prerequisites for sprinting to full advantage.

We present the computational sprinting game to manage a collection of sprinters. The sprinting architecture, which defines the sprinting mechanism as well as power and cooling constraints, determines rules of the game. A strategic agent, representing a multiprocessor and its workload, independently decides whether to sprint at the beginning of an epoch. The agent anticipates her action's outcomes, knowing that the chip must cool before sprinting again. Moreover, she analyzes system dynamics, accounting for competitors' decisions and risk of power emergencies.

We find the equilibrium in the computational sprinting game, which permits distributed management. In an equilibrium, no agent can benefit by deviating from her optimal strategy. The datacenter relies on agents' incentives to decentralize management as each agent self-enforces her part of the sprinting policy. Decentralized equilibria allow datacenters to avoid high communication costs and unwieldy enforcement mechanisms in centralized management. More-

*These authors contributed equally to this work.

over, equilibria outperform prior heuristics. In summary, we present the following contributions:

- **Sprinting Architecture (§2).** We present a system of independent sprinters that share power – a rack of chip multiprocessors. Sprinting multiprocessors activate additional cores and increase clock rates. Sprints are constrained by chips’ thermal limits and rack power limits.
- **Sprinting Game (§3).** We define a repeated game in which strategic agents sprint based on application phases and system conditions. The game divides time into epochs and agents play repeatedly. Actions in the present affect performance and the ability to sprint in the future.
- **Dynamics and Strategies (§4).** We design agents who sprint when the expected utility from doing so exceeds a threshold. We devise an algorithm that optimizes each agent’s threshold strategy. The strategies produce an equilibrium in which no agent benefits by deviating from her optimal threshold.
- **Performance (§5–§6).** We evaluate the game for Spark-based datacenter applications, which exhibit diversity in phase behavior and utility from sprinting. The game increases task throughput by 4–6 \times when compared to prior heuristics in which agents sprint greedily.

2. The Sprinting Architecture

We present a sprinting architecture for chip multiprocessors in datacenters. Multiprocessors sprint by activating additional cores and increasing their voltage and frequency. Datacenter applications, with their abundant task parallelism, scale across additional cores as they become available. We focus on applications built atop the Spark framework, which extends Hadoop for memory caching [46]. In Figure 1, Spark benchmarks perform 2–7 \times better on a sprinting multiprocessor, but dissipates 1.8 \times the power. Power produces heat.

Sprinters require infrastructure to manage heat and power. First, the chip multiprocessor’s thermal package and heat sink must absorb surplus heat during a sprint [37, 40]. Second, the datacenter rack must employ batteries to guard against power emergencies caused by a surplus of sprinters on a shared power supply. Third, the system must implement management policies that determine which chips sprint.

2.1 Chip Multiprocessor Support

A chip multiprocessor’s maximum power level depends on its thermal package and heat sink. Given conventional heat sinks, thermal constraints are the primary determinant of multiprocessor performance, throttling throughput and overriding constraints from power delivery and off-chip bandwidth [29]. More expensive heat sinks employ phase change materials (PCMs), which increase thermal capacitance, to absorb and dissipate excess heat [38, 40]. The quality of the thermal package, as measured by its thermal capacitance and conductance, determines parameters of the sprinting game.

The choice of thermal package dictates the maximum duration of a sprint [40]. Whereas water, air and foam enable sprint durations on the order of seconds [38], PCMs enable durations on the order of minutes if not hours [39, 40, 44]. Our sprint architecture employs paraffin wax, which is attractive for its high thermal capacitance and tunable melting point when blended with polyolefins [36]. We estimate a chip with paraffin wax can sprint with durations on the order of 150 seconds.

After a sprint, the thermal package must release its heat before the chip can sprint again. The average cooling duration, denoted as Δt_{cool} , is the time required before the PCM returns to ambient temperature. The rate at which the PCM dissipates heat depends on its melting point and the thermal resistance between the material and the ambient [36]. Both factors can be engineered and, with paraffin wax, we estimate a cooling duration on the order of 300 seconds, twice the sprint’s duration.

Different types of workloads may demand different sprint durations. Sprints for online queries requires tens of milliseconds or less [26]. Sprints for parallel workloads requires seconds or more [38]. And those for warehouse-scale thermal management requires support for hours [41]. In this paper, we study data analytics applications that would prefer to sprint indefinitely. In this setting, the primary determinant of a sprint’s duration is the thermal package.

2.2 Datacenter Support

At scale, servers within the same rack share a power supply. Chip multiprocessors draw current from a shared power distribution unit (PDU) that is connected to a branch circuit and protected by a circuit breaker (CB). Datacenter architects deploy servers to oversubscribe branch circuits for efficiency. Oversubscription utilizes a larger fraction of the facility’s provisioned power for computation. But it relies on power capping and varied computational load across servers to avoid tripping circuit breakers or violating contracts with utility providers [15, 16]. Although sprints boost computation for complex queries and during peak loads [26, 49], the risk of a power emergency increases with the number of sprinters in a power capped datacenter.

Circuit Breakers and Trip Curves. Figure 2 presents the circuit breaker’s trip curve, which specifies how sprint duration and power combine to determine whether the breaker trips. The trip time corresponds to the sprint’s duration. Longer sprints increase the probability of tripping the breaker. The current draw corresponds to the number of simultaneous sprints as each sprinter contributes to the load above rated current. Higher currents increase the probability of tripping the breaker. Thus, the tolerance for sprints depends on their duration and power. The breaker dictates the number of sprinters supported by the datacenter rack.

Figure 3 associates the number of sprinters to the tripping probability for a given trip time. Let n_S denote the number

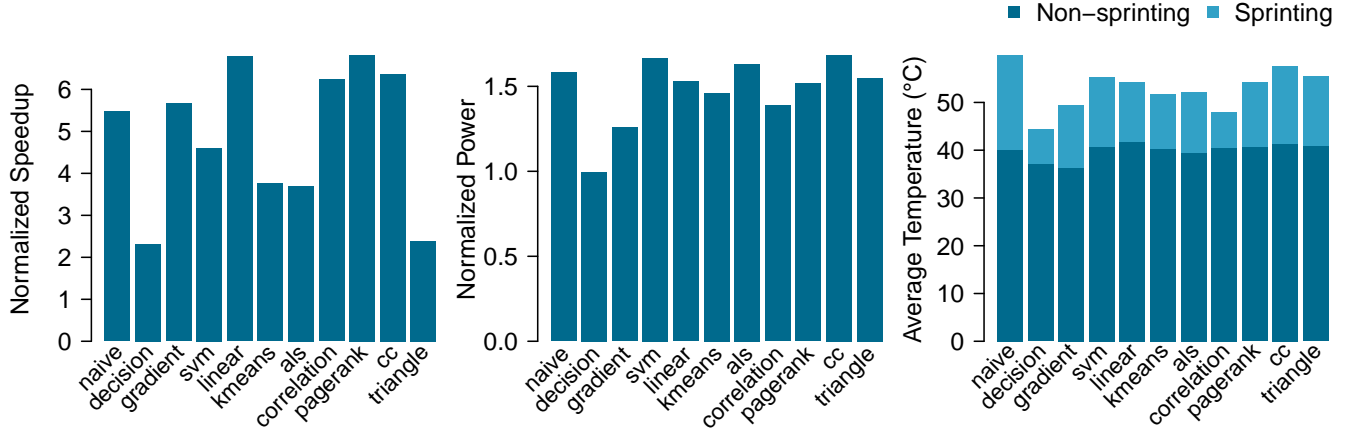


Figure 1. Normalized speedup, power, and temperature for varied Spark benchmarks when sprinting. Nominal operation supplies three cores at 1.2GHz. Sprint supplies twelve cores at 2.7GHz.

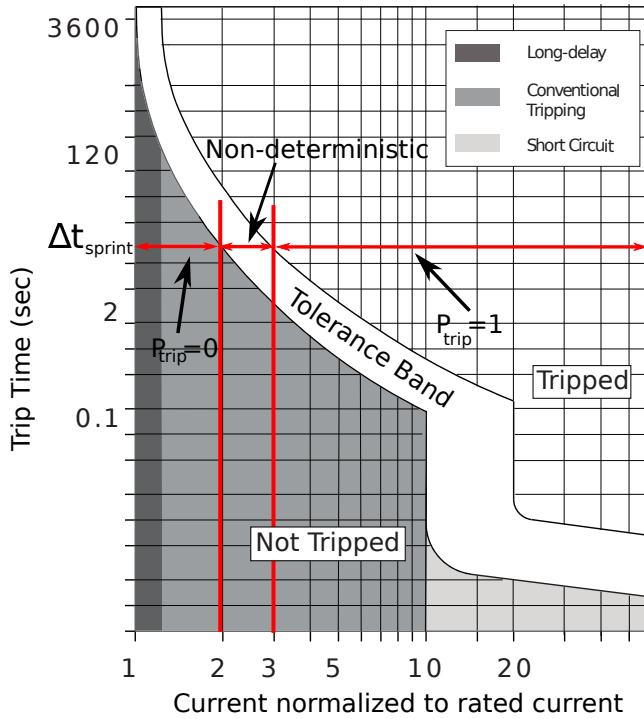


Figure 2. Typical trip curve of a circuit breaker [16].

of sprinters and let P_{trip} denote the probability of tripping the breaker. The breaker occupies one of the following regions:

- **Non-Tripped.** P_{trip} is zero when $n_S < N_{\min}$
- **Non-Deterministic.** P_{trip} is a non-decreasing function of n_S when $N_{\min} \leq n_S < N_{\max}$
- **Tripped.** P_{trip} is one when $n_S \geq N_{\max}$

Note that N_{\min} and N_{\max} depend on the breaker's trip curve and the application's demand for power when sprinting.

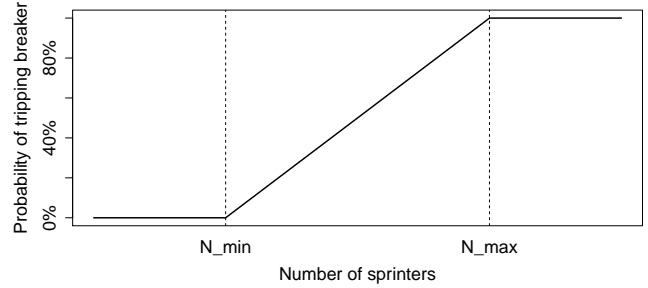


Figure 3. Probability of tripping the rack's circuit breaker.

Suppose a sprinter dissipates twice as much power as a non-sprinter, as in Spark applications on chip multiprocessors. We find that the breaker does not trip when less than 25% of the chips sprint and definitely trips when more than 75% of the chips sprint. In other words, $N_{\min} = 0.25N$ and $N_{\max} = 0.75N$. We consider UL489 circuit breakers from Rockwell Automation, which can be overloaded to 125-175% of rated current for a 150 second sprint [6, 45, 49].

Uninterruptible Power Supplies. When the breaker trips and resets, power distribution switches from the branch circuit to the uninterruptible power supply (UPS) [19, 20]. The rack augments power delivery with batteries to complete sprints in progress. Lead acid batteries support discharge times of 5-120 minutes, long enough to support the duration of a sprint. After completing sprints and resetting the breaker, servers resume computation on the branch circuit.

However, servers are forbidden from sprinting again until UPS batteries have been recharged. Sprints before recovery would compromise server availability and increase vulnerability to power emergencies. Moreover, frequent discharges without recharges would shorten battery life. The average recovery duration, denoted by $\Delta t_{\text{recover}}$, depends on the UPS discharge depth and recharging time. A battery

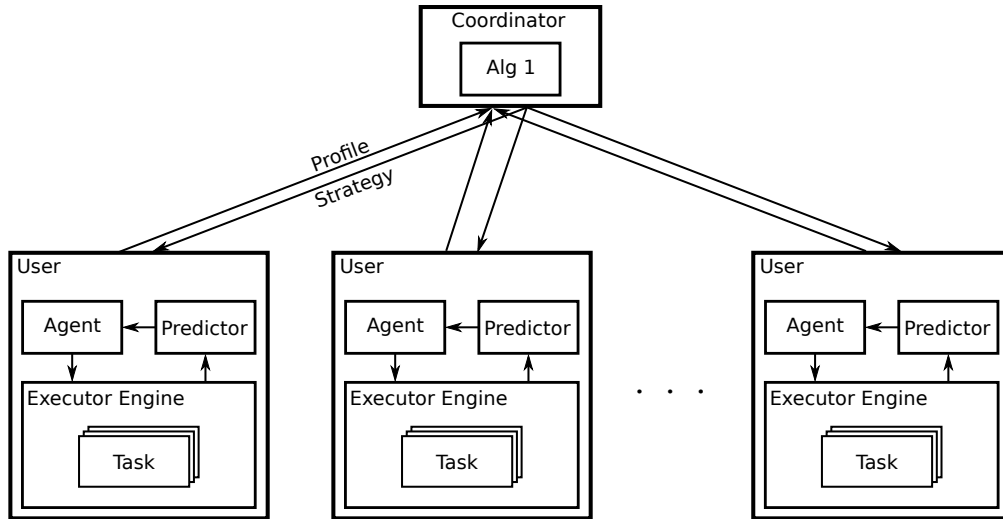


Figure 4. Users deploy task executors and agents that decide when to sprint. Agents send performance profiles to a coordinator and receives optimized sprinting strategies.

can be recharged to 85% capacity in 8-10 \times the discharge time [7], which corresponds to 8-10 \times the sprint duration.

Servers are permitted to sprint again after recharge and recovery. However, if every chip multiprocessor in the rack were to sprint simultaneously and immediately after recovery, they would trigger another power emergency. The rack must stagger the distribution of sprinting permissions to avoid dl/dt problems.

2.3 Power Management

Figure 4 illustrates the management framework for a rack of sprinting chip multiprocessors. The framework supports policies that pursue the performance of sprints while avoiding system instability. Unmanaged and excessive sprints may trip breakers, trigger emergencies, and degrade performance at scale. The framework achieves its objectives with strategic agents and coarse-grained coordination.

Users and Agents. Each user deploys three run-time components: executor, agent, and predictor. Executors provide clean abstractions, encapsulating applications that could employ different software frameworks [25]. The executor supports task-parallel computation by dividing an application into tasks, constructing a task dependence graph, and scheduling tasks dynamically based on available resources. Task scheduling is particularly important as it increases parallelism when sprinting powers-on cores and tolerates faults when cooling and recovery powers-off cores.

Agents are strategic and selfish entities that act on users' behalf. They decide whether to sprint by continuously analyzing fine-grained application phases. Because sprints are followed by cooling and recovery, an agent sprints judiciously and targets application phases that benefit most from extra capability. Agents use predictors that estimate utility from sprinting based on software profiles and hardware

counters. Each agent represents a user and her application on a chip multiprocessor.

Coordination. The coordinator collects profiles from all agents and assigns tailored sprinting strategies to each agent. The coordinator interfaces with strategic agents who may attempt to manipulate system outcomes by misreporting profiles or deviating from assigned strategies. Fortunately, our game-theoretic mechanism guards against such behavior.

First, agents will truthfully report their performance profiles. In large systems, game theory provides incentive compatibility, which means that agents cannot improve their utility by misreporting their preferences. The coordinator assigned a tailored strategy to each agent based on system conditions. An agent who misreports her profile has little influence on conditions in a large system. Not only does she fail to affect others, an agent who misreports suffers degraded performance as the coordinator assigns her a poorly suited strategy based on inaccurate profiles.

Second, agents will implement their assigned strategies because the coordinator optimizes those strategies to produce an equilibrium. In equilibrium, every agent implements her strategy and no agent benefits when deviating from it. An equilibrium has compelling implications for management overheads. If each agent knows that every other agent is playing her assigned strategy, she will do the same without further communication with the coordinator. Global communication between agents and the coordinator is infrequent and occurs only when system profiles change. Local communication between each user's run-time components (*i.e.*, executor, agent, predictor) is frequent but employs inexpensive, inter-process mechanisms. In effect, an equilibrium permits the distributed enforcement of sprinting policies.

In contrast, the centralized enforcement of coordinated policies poses several challenges. First, it requires frequent

and global communication as each agent decides whether to sprint by querying the coordinator at the start of each epoch. The length of an epoch is short and corresponds to sprint duration. Moreover, without equilibria, agents with kernel privileges could ignore prescribed policies, sprint at will, and cause power emergencies that harm all agents. Avoiding such outcomes in a multi-tenant datacenter would require a distributed runtime. The runtime, not the agent, would have kernel privileges for power management, introducing an abstraction layer and overheads.

3. The Sprinting Game

We present a computational sprinting game, which governs demands for power and manages system dynamics. We design a dynamic game that divides time into epochs and asks agents to play repeatedly. Agents represent chip multiprocessors that share a power supply. Each agent chooses to sprint independently, pursuing benefits in the current epoch and estimating repercussions in future epochs. Multiple agents can sprint simultaneously, but they risk tripping the circuit breaker and triggering power emergencies that harm global performance.

3.1 Game Formulation

The game considers N agents who run task-parallel applications on N chip multiprocessors. Each agent computes in either normal or sprinting mode. The normal mode uses a fraction of the cores at low frequency whereas sprints use all cores at high frequency. Sprints rely on the executor to increase task parallelism and exploit extra cores. In this paper, for example, we consider three cores at 1.2GHz in normal mode and twelve cores at 2.7GHz in a sprint.

The repeated game divides time into epochs. The duration of an epoch corresponds to the duration of a safe sprint, which neither overheats the chip nor trips the circuit breaker. An agent’s utility from a sprint varies across epochs according to her application’s phases. Agents apply a discount factor $\delta < 1$ to future utilities as, all else being equal, they prefer performance sooner rather than later.

3.2 Agent States

At any given time, an agent occupies one of three states—active (A), chip cooling (C), and rack recovery (R)—according to her actions and those of others in the rack. An agent’s state describes whether she can sprint, and describes how cooling and recovery impose constraints on her actions.

Active (A) – Agent can safely sprint. By default, an agent in an active state operates her chip in normal mode, with a few processor cores running at low frequency. The agent has an option to sprint, which deploys additional cores and raises the frequency. She decides whether to sprint by comparing a sprint’s benefits in the current epoch against benefits from deferring the sprint to a future epoch. If the agent sprints, her state in the next epoch is cooling.

Chip Cooling (C) – Agent cannot sprint. After a sprint, an agent remains in the cooling state until excess heat has been dissipated. Cooling requires a number of epochs Δt_{cool} , which depends on the chip’s thermal conductance and resistance, the heat sink and cooling technology, and the ambient temperature. An agent in the cooling state stays in this state with probability p_c and returns to the active state with probability $1 - p_c$. Probability p_c is defined so that $1/(1 - p_c) = \Delta t_{\text{cool}}$.

Rack Recovery (R) – Agent cannot sprint. When multiple chips sprint simultaneously, their total current draw may trip the rack’s circuit breaker, trigger a power emergency, and require supplemental current from batteries. After an emergency, all agents remain in the recovery state until batteries recharge. Recovery requires a number of epochs $\Delta t_{\text{recover}}$, which depends on the rack’s power supply and its battery capacity. Agents in the recovery state stay in this state with probability p_r and return to the active state with probability $1 - p_r$. Probability p_r is defined so that $1/(1 - p_r) = \Delta t_{\text{recover}}$.

In summary, the states describe and enforce system constraints. A chip that sprints must cool before sprinting again. A rack that supports sprints with batteries must recharge those batteries before doing so again. Agents in cooling or recovery states are constrained, but those in active states will sprint strategically.

3.3 Agent Actions and Strategies

Agents have two possible actions — sprint or do not sprint. Strategic agents decide between these actions to maximize their utilities. Each agent’s sprinting strategy depends on various factors, including

- agent’s state and her utility from sprinting,
- agent’s history of sprinting,
- other agents’ states,
- other agents’ utilities, strategies, and histories.

Sprinting strategies determine the game’s performance. Agents that greedily sprint at every opportunity produce several sub-optimal outcomes. First, chips and racks would spend many epochs in cooling and recovery states, respectively, degrading system throughput. Moreover, agents who sprint at the first opportunity constrain themselves in future epochs, during which sprints may be even more beneficial.

In contrast, sophisticated strategies improve agent utility and system performance. Strategic agents sprint during the epochs that benefit most from additional cores and higher frequencies. Moreover, they consider other agents’ strategies because the probability of triggering a power emergency and entering the recovery state increases with the number of sprinters. We analyze the game’s governing dynamics to optimize each agent’s strategy and maximize her performance.

4. Game Dynamics and Agent Strategies

A comprehensive approach to optimizing strategies considers each agent—her state, utility, and history—to determine whether sprinting maximizes her performance given her competitor’s strategies and system state. In practice, however, this optimization does not scale to hundreds or thousands of agents.

For tractability, we analyze the population of agents by defining key probability distributions on population behavior. This approach has several dimensions. First, we reason about population dynamics in expectation and consider an “average” agent. Second, we optimize each agent’s strategy in response to the population rather than individual competitors. Third, we find an equilibrium in which no agent can perform better by deviating from her optimal strategy.

4.1 Mean Field Equilibrium

The mean field equilibrium (MFE), a concept drawn from economic game theory, is an approximation method used when analyzing individual agents in a large system is intractable [3–5, 23, 27]. With the MFE, we can characterize expected behavior for a population of agents and then optimize each agent’s strategy against that expectation. We can reason about the population and neglect individual agents because any one agent has little impact on overall behavior in a large system.

The mean field analysis for the sprinting game focuses on the sprint distribution, which characterizes the number of agents who sprint when the rack is not in the recovery state. In equilibrium, the sprint distribution is stationary and does not change across epochs. In any given epoch, some agents complete a sprint and enter the cooling state while others leave the cooling state and begin a sprint. Yet the number of agents who sprint is unchanged in expectation.

The stationary distribution for the number of sprinters translates into stationary distributions for the rack’s current draw and the probability of tripping the circuit breaker – see Figure 3. Given the rack’s tripping probability, which concisely describes population dynamics, an agent can formulate her best response and optimize her sprinting strategy to maximize performance.

We find an equilibrium by characterizing a population’s statistical distributions, optimizing agents’ responses, and simulating game play to update the population. We specify an initial value for the probability of tripping the breaker and iterate as follows.

- **Optimize Sprint Strategy (§4.2).** Given the probability of tripping the breaker P_{trip} , each agent optimizes her sprinting strategy to maximize her performance. She sprints if performance gains from doing so exceed some threshold. Optimizing her strategy means setting her threshold u_T .

- **Characterize Sprint Distribution (§4.3).** Given that each agent sprints according to her threshold u_T , the game characterizes population behavior. It estimates the expected number of sprinters n_S , calculates their demand for power, and updates the probability of tripping the breaker P'_{trip} .
- **Check for Equilibrium.** The game is in equilibrium if $P'_{\text{trip}} = P_{\text{trip}}$. Otherwise, iterate with the new probability of tripping the breaker.

4.2 Optimizing the Sprint Strategy

An agent considers three factors when optimizing her sprinting strategy: the probability of tripping the circuit breaker P_{trip} , her utility from sprinting u , and her state. An agent occupies either the active (A), cooling (C), or recovery (R) state. To maximize expected value and decide whether to sprint, each agent optimizes the following Bellman equation.

$$V(u, A) = \max\{V_S(u, A), V_{-S}(u, A)\} \quad (1)$$

The Bellman equation quantifies value when an agent acts optimally in every epoch. V_S and V_{-S} are the expected values from sprinting and not sprinting, respectively. If $V_S(u, A) > V_{-S}(u, A)$, then sprinting is optimal. The game solves the Bellman equation and identifies actions that maximize value with dynamic programming.

Value in Active State. Sprinting defines a repeated game in which an agent acts in the current epoch and encounters consequences of that action in future epochs. Accordingly, the Bellman equation is recursive and expresses an action’s value in terms of benefits in the current epoch plus the discounted value from future epochs.

Suppose an agent in the active state decides to sprint. Her value from sprinting is her immediate utility u plus her discounted utility from future epochs. When she sprints, her future utility is calculated for the chip cooling state $V(C)$ or calculated for the rack recovery state $V(R)$ when her sprint trips the circuit breaker.

$$V_S(u, A) = u + \delta [V(C)(1 - P_{\text{trip}}) + V(R)P_{\text{trip}}] \quad (2)$$

On the other hand, an agent who does not sprint will remain in the active state unless other sprinting agents trip the circuit breaker and trigger a power emergency that requires recovery.

$$V_{-S}(u, A) = \delta [V(A)(1 - P_{\text{trip}}) + V(R)P_{\text{trip}}] \quad (3)$$

We use $V(A)$ to denote an agent’s expected value from being in the active state, which depends on an agent’s utility from sprinting. The game profiles an application and its time-varying computational phases to obtain a probability density function $f(u)$, which characterizes how often an agent derives utility u from sprinting. With this density, the game estimates expected value.

$$V(A) = \int V(u, A) f(u) du \quad (4)$$

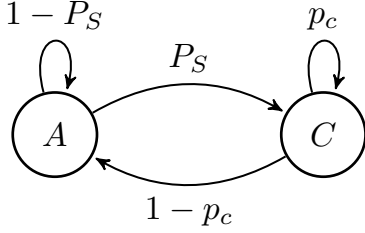


Figure 5. State transitions when agent sprints, chip cools. Assumes an agent is not in recovery.

Value in Cooling and Recovery States. An active agent transitions into cooling and recovery states when she and/or others sprint. Because agents cannot sprint while cooling or recovering, their expected values from these states do not depend on their utility from sprinting.

$$V(C) = \delta [V(C)p_c + V(A)(1 - p_c)](1 - P_{\text{trip}}) + \delta V(R)P_{\text{trip}} \quad (5)$$

$$V(R) = \delta [V(R)p_r + V(A)(1 - p_r)] \quad (6)$$

Parameters p_c and p_r are technology-specific probabilities of an agent in cooling and recovery states staying in those states. An agent in cooling will remain in this state with probability p_c and become active with probability $1 - p_c$, assuming the rack avoids a power emergency. If the circuit breaker trips, an agent enters recovery. An agent remains in recovery with probability p_r and becomes active with probability $1 - p_r$. The game tunes these parameters to reflect the time required for chip cooling after a sprint and for rack recovery after a power emergency – see §2.

Threshold Strategy. An agent should sprint if her utility from doing so is greater than not. But when is this the case? Equation (8), which follows from Equations (2)–(3), states that an agent should sprint if her utility u is greater than her optimal threshold for sprinting u_T .

$$V_S(u, A) > V_{-S}(u, A) \quad (7)$$

$$u > \underbrace{\delta (V(A) - V(C)) (1 - P_{\text{trip}})}_{u_T} \quad (8)$$

Thus, an agent uses threshold u_T to test a sprint’s utility. If sprinting improves performance by more than the threshold, an agent should sprint. Applying this strategy in every epoch maximizes expected value across time in the repeated game.

4.3 Characterizing the Sprint Distribution

Given threshold u_T for her strategy, an agent uses her density function on utility to estimate the probability that she sprints, p_s , in a given epoch.

$$p_s = \int_{u_T}^{u_{\max}} f(u) du \quad (9)$$

The probabilities of sprinting (p_s) and cooling (p_c) define a Markov chain that describes each agent’s behavior – see

Algorithm 1: Optimizing the Sprint Strategy

input : Probability density function for sprinting utilities ($f(u)$)

output: Optimal sprinting threshold (u_T)

$j \leftarrow 1$

$P_{\text{trip}}^0 \leftarrow 1$

while P_{trip}^j not converged **do**

$u_T^j \leftarrow$ DP solution for Equations (1)–(8) with P_{trip}^j

$p_S^j \leftarrow$ Equation (9) with $f(u)$, u_T^j

$n_S^j \leftarrow$ Equation (10) with MC solution and P_S^j

$P_{\text{trip}}^{j+1} \leftarrow$ Equation (11)

$j \leftarrow j + 1$

end

Figure 5, which assumes the agent is not in recovery. As agents play their strategies, the Markov chain converges to a stationary distribution in which each agent is active with probability p_A . If N agents play the game, the expected number of sprinters is

$$n_S = p_s \times p_A \times N \quad (10)$$

As the number of sprinters increases, so does the rack’s current draw and the probability of tripping the breaker. Given the expected number of sprinters, the game updates the probability of tripping the breaker according to its trip curve (e.g., Figure 3). Mathematically, the curve is described as follows.

$$P_{\text{trip}} = \begin{cases} 0 & \text{if } n_S < N_{\min} \\ \frac{n_S - N_{\min}}{N_{\max} - N_{\min}} & \text{if } N_{\min} \leq n_S \leq N_{\max} \\ 1 & \text{if } n_S > N_{\max} \end{cases} \quad (11)$$

P_{trip} determines n_S , which determines P'_{trip} . If $P_{\text{trip}} = P'_{\text{trip}}$, then agents are playing optimized strategies that produce an equilibrium.

4.4 Finding the Equilibrium

When the game begins, agents make initial assumptions about population behavior and the probability of tripping the breaker. Agents optimize their strategies in response to population behavior. Strategies produce sprints that affect the probability of tripping the breaker. Over time, population behavior and agent strategies converge to a stationary distribution, which is consistent across epochs. The game is in equilibrium if the following conditions hold.

- Given tripping probability P_{trip} , the sprinting strategy dictated by threshold u_T is optimal and solves the Bellman equation in Equations (1)–(3).
- Given sprinting strategy u_T , the probability of tripping the circuit breaker is P_{trip} and is calculated by Equations (9)–(11).

In equilibrium, every agent plays her optimal strategy and no agent benefits when deviating from her strategy. In practice,

Table 1. Spark Workloads

Benchmark	Category	Dataset	Data Size
NaiveBayesian	Classification	kdda2010 [43]	2.5G
DecisionTree	Classification	kdda2010	2.5G
GradientBoostedTrees	Classification	kddb2010 [43]	4.8G
SVM	Classification	kdda2010	2.5G
LinearRegression	Classification	kddb2010	4.8G
Kmeans	Clustering	uscensus1990 [30]	327M
ALS	Collaborative Filtering	movielens2015 [24]	325M
Correlation	Statistics	kdda2010	2.5G
PageRank	Graph Processing	wdc2012 [34]	5.3G
ConnectedComponents	Graph Processing	wdc2012	5.3G
TriangleCounting	Graph Processing	wdc2012	5.3G

the coordinator in the management framework finds and maintains an equilibrium with a mix of offline and online analysis.

Offline Analysis. Agents sample epochs and measure utility from sprinting to produce a density function $f(u)$, which characterizes how often an agent sees utility u from sprinting. The coordinator collects agents’ density functions, analyzes population dynamics, and tailors sprinting strategies for each agent. Finally, the coordinator assigns optimized strategies to support online sprinting decisions.

Algorithm 1 describes the coordinator’s offline analysis. It initializes the probability of tripping the breaker. Then it iteratively analyzes population dynamics to find an equilibrium. Each iteration proceeds in three steps. First, the coordinator optimizes sprinting threshold u_T by solving the dynamic program defined in Equations (1)–(8). Second, it estimates the number of sprinters according to Equation (10). Finally, it updates the probability of tripping the breaker according to Equation (11). The algorithm terminates when thresholds, number of sprinters, and tripping probability are stationary.

The offline algorithm has no performance overhead. The analysis runs periodically to update sprinting strategies and the tripping probability as application mix and system conditions evolve. It does not affect an application’s critical path as agents use updated strategies when they become available but need not wait for them.

The algorithm requires little computation. It solves the dynamic program with value-iteration, which has a convergence rate that depends on the discount factor δ . The number of iterations grows polynomially in $(1-\delta)^{-1}$. We implement and run the algorithm on an Intel® Core™ i5 processor with 4GB of memory. The algorithm completes in less than 10s, on average.

Online Strategy. An agent decides whether to sprint at the start of each epoch by estimating a sprint’s utility and comparing it against her threshold. Estimation could be implemented in several ways. An agent could use the first few

seconds of an epoch to profile her normal and sprinting performance. Alternatively, an agent could use heuristics to estimate utility from additional cores and higher clock rates. For example, task queue occupancy and cache misses are associated with a sprint’s impact on task parallelism and instruction throughput, respectively. Comparisons with a threshold are trivial. If an agent decides to sprint, it turns on otherwise disabled cores using CPU-hotplug and increases clock rates using ACPI [35].

5. Experimental Methodology

Servers and Sprints. The agent and its application are pinned to a chip multiprocessor, an Intel® Xeon® E5-2697 v2 that can run at 2.70GHz. Two multiprocessors share 128GB of main memory within a server. An agent runs in normal or sprinting mode. In normal mode, the agent uses three 1.2GHz cores. In sprinting mode, the agent uses twelve 2.7GHz cores. We turn cores on and off with Linux `sysfs`. In principle, sprinting represents any mechanism that performs better but consumes more power.

Workloads. We evaluate Apache Spark workloads [46]. The Spark run-time engine dynamically schedules tasks to use available cores and maximize parallelism, adapting as sprints cause the number of available cores to vary across epochs. Each agent runs a Spark application on representative datasets as shown in Table 1.

Profiling Methods. We collect system profiles that measure power and temperature, using the Intel® Performance Counter Monitor 2.8 to read MSR registers once every second. We collect workload profiles by modifying Spark (v1.3.1) to log the IDs of jobs, stages, and tasks upon their completion.

We measure application performance in terms of the number of tasks completed per second (TPS). Each application defines a number of jobs, and each job is divided into tasks that compute in parallel. Jobs are completed in sequence while tasks can be completed out of order. The total number of tasks in a job is constant and independent

Table 2. Experimental Parameters

Description	Symbol	Value
Min # sprinters	N_{\min}	250
Max # sprinters	N_{\max}	750
Prob. of staying in cooling	p_c	0.50
Prob. of staying in recovery	p_r	0.88
Discount factor	δ	0.99

of the available hardware resources. Thus, TPS measures performance for a fixed amount of work.

We trace TPS during an application’s end-to-end execution in normal and sprinting modes. Since execution times differ in the two modes, comparing traces requires some effort. For every second in normal mode, we measure the number of tasks completed and estimate the number of tasks that would have been completed in the sprinting mode. For our evaluation, we estimate a sprint’s speedup by comparing the measured non-sprinting trace and the interpolated sprinting trace. In a practical system, online profiling and heuristics would be required.

Simulation Methods. We simulate 1000 users and evaluate their performance in the sprinting game. The R-based simulator uses traces of Spark computation collected in both normal and sprinting modes. The simulator models system dynamics as agents sprint, cool, and recover.

One set of simulations evaluates homogeneous agents who arrive randomly and launch the same type of Spark application; randomized arrivals cause application phases to overlap in diverse ways. A second set of simulations evaluates heterogeneous agents who launch different types of applications, further increasing the diversity of overlapping phases. Diverse phase behavior exercises the sprinting game as agents and their processors optimize strategies in response to varied competitors’.

Table 2 summarizes technology and system parameters. Parameters N_{\min} and N_{\max} are set by the circuit breaker’s tripping curve. Parameters p_c and p_r are set by the chip’s cooling mechanism and the rack’s UPS batteries. These probabilities decrease as cooling efficiency and recharge speed increase – see §2.

6. Evaluation

We evaluate the sprinting game and its equilibrium threshold against several alternatives. Although there is little prior work in managing sprints, we compare against three heuristics that represent broader perspectives on power management. First, greedy heuristics focus on the present and neglect the future [49]. Second, control-theoretic heuristics are reactive rather than proactive [1, 2]. Third, centralized heuristics focus on the system and neglect individuals. Unlike these approaches, the sprinting game anticipates the fu-

ture and emphasizes strategic agents who participate in a shared system.

Greedy (G) permits agents to sprint as long as the chip is not cooling and the rack is not recovering. This mechanism may frequently trip the breaker and require rack recovery. After recovery, agent wake-ups and sprints are staggered across two epochs. Greedy produces a poor equilibrium—knowing that everyone is sprinting, an agent’s best response is to sprint as well.

Exponential Backoff (E-B) throttles the frequency at which agents sprint. An agent sprints greedily until the breaker trips. After the first trip, agents wait 0 – 1 epoch before sprinting again. After the second trip, agents wait 0 – 3 epochs. After the t -th trip, agents wait for some number of epochs drawn randomly from $[0, 2^t - 1]$. The waiting interval contracts by half if the breaker has not been tripped in the past 100 epochs.

Cooperative Threshold (C-T) assigns each agent the globally optimal threshold for sprinting. The coordinator exhaustively searches for the threshold that maximizes system performance. The coordinator enforces these thresholds although they do not reflect agents’ best responses to system dynamics. These thresholds do not produce an equilibrium but do provide an upper bound on performance.

Equilibrium Threshold (E-T) assigns each agent her optimal threshold from the sprinting game. The coordinator collects performance profiles and implements Algorithm 1 to produce thresholds that reflect agents’ best responses to system dynamics. These thresholds produce an equilibrium and agents cannot benefit by deviating from their assigned strategy.

6.1 Sprinting Behavior

Figure 6 compares sprinting policies and resulting system dynamics as 1000 instances of *Decision Tree*, a representative application, computes for a sequence of epochs. Sprinting policies determine how often agents sprint and whether sprints trigger emergencies. Ideally, policies would permit agents to sprint up until they trip the circuit breaker. In this example, 250 of the 1000 agents for *Decision Tree* can sprint before triggering a power emergency.

Greedy heuristics are aggressive and inefficient. A sprint in the present precludes a sprint in the near future, harming subsequent tasks that could have benefited more from the sprint. Moreover, frequent sprints risk power emergencies and require rack-level recovery. G produces an unstable system, oscillating between full-system sprints that trigger emergencies and idle recovery that harms performance. G staggers the distribution of sprinting permissions after recovery to avoid dl/dt problems, which reduces but does not eliminate instability.

Control-theoretic approaches are more conservative, throttling sprints in response to power emergencies. E-B adaptively responds to feedback, producing a more stable system with fewer sprints and emergencies. Indeed, E-B may be too

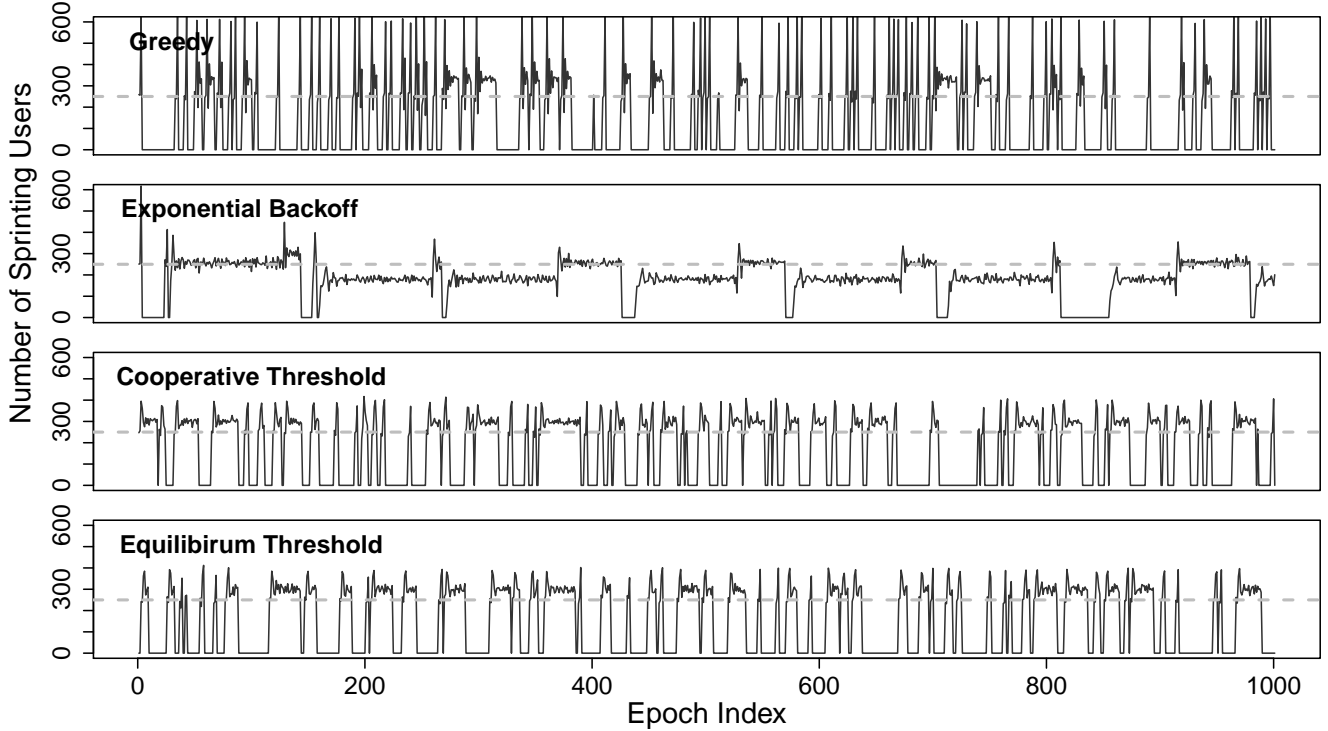


Figure 6. Sprinting behavior for a representative application, Decision Tree. Black line denotes number of sprinters. Grey line denotes the point at which sprinters risk a power emergency, N_{min} .

conservative, throttling sprints beyond what is necessary to avoid tripping the circuit breaker. The number of sprinters is consistently lower than N_{min} , which is safe but leaves sprinting opportunities unexploited. Thus, in neither G nor E-B do agents sprint to full advantage.

In contrast, the computational sprinting game performs well by embracing agents’ strategies. E-T produces an equilibrium in which agents play their optimal strategies and converge to a stationary distribution. In equilibrium, the number of sprinters is just slightly above $N_{min} = 250$, the number that causes a breaker to transition from the non-tripped region to the tolerance band. After emergency and recovery, the system quickly returns to equilibrium. Note that E-T’s system dynamics are similar to those from the high-performance, cooperative C-T policy.

Figure 7 shows the percentage of time an agent spends in active, cooling, and recovery states. The analysis highlights G and E-B’s limitations. With G, an agent spends more than 50% of its time in recovery, waiting for batteries to recharge after an emergency. With E-B, an agent spends nearly 40% of its time in active mode but not sprinting.

Agents spend comparable shares of their time sprinting in each policy. However, this observation understates the sprinting game’s advantage. G and E-B sprint at every opportunity and ignore transitions into cooling states, which preclude sprints in future epochs. In contrast, E-T and C-T’s sprints are more timely as strategic agents sprint only when

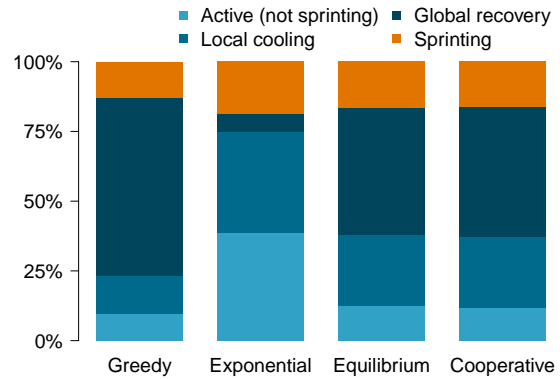


Figure 7. Percentage of time spent in agent states for a representative application, Decision Tree.

estimated benefits exceed an optimized threshold. Thus, a sprint in E-T or C-T contributes more to performance than one in G or E-B.

6.2 Sprinting Performance

Figure 8 shows task throughput under varied policies. The sprinting game outperforms greedy heuristics and is competitive with globally optimized heuristics. Rather than sprinting greedily, E-T uses equilibrium thresholds to select more profitable epochs for sprinting. E-T outperforms G and E-B by up to $6.8\times$ and $4.8\times$, respectively. Agents who use their

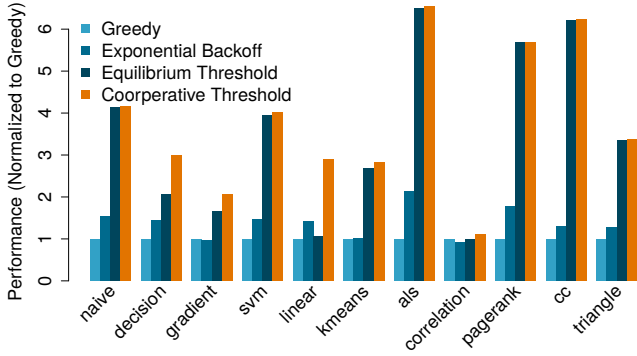


Figure 8. Performance, measured in tasks per second and normalized against greedy, for a single application type.

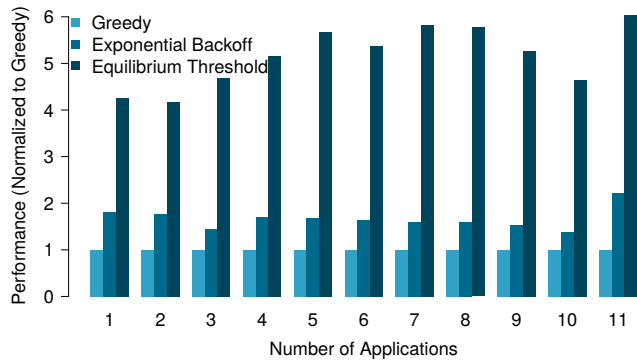


Figure 9. Performance, measured in tasks per second and normalized against greedy, for multiple application types.

own strategies to play the game competitively produce outcomes that rival expensive cooperation. E-T’s task throughput is 90% that of C-T’s for most applications.

Linear Regression and *Correlation* are outliers, achieving only 36% and 65% of cooperative performance. For these applications, E-T performs as badly as G and E-B because the applications’ performance profiles exhibit little variance and all epochs benefit similarly from sprinting. When an agent cannot distinguish between epochs, she sets a low threshold and sprints for every epoch. In effect, for such applications, E-T produces a greedy equilibrium.

Thus far, we have considered agents for applications of the same type that compute together. When agents represent different types of applications, E-T assigns different sprinting thresholds for each type. Figure 9 shows performance as the number of application types increases. We evaluate performance for a system with k types by randomly selecting k applications, finding each agent’s strategy under an E-T policy, and repeating ten times to report an average. As before, E-T performs much better than G and E-B. We do not evaluate C-T because searching for optimal thresholds for multiple types of agents is computationally hard.

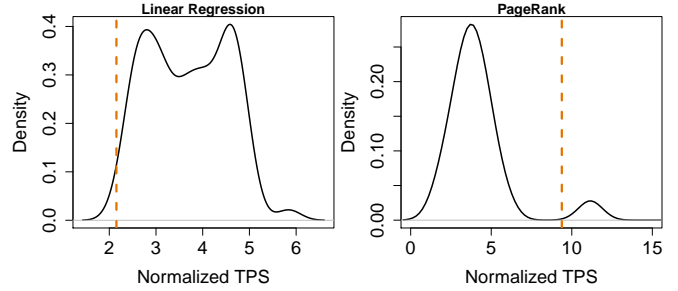


Figure 10. Probability density for sprinting speedups.

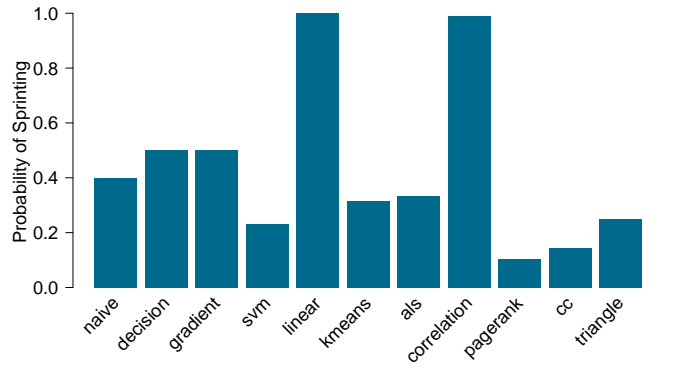


Figure 11. Probability of sprinting.

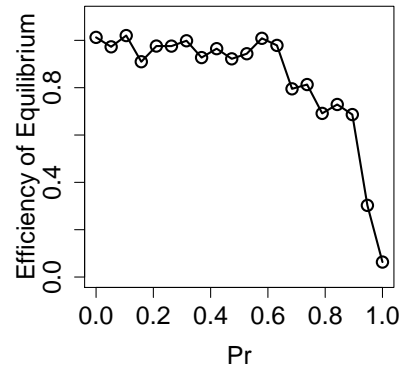


Figure 12. Efficiency of equilibrium thresholds.

6.3 Sprinting Strategies

Figure 10 uses kernel density plots for two representative applications, *Linear Regression* and *PageRank*, to show how often and how much their tasks benefit from sprinting. *Linear Regression* presents a narrower distribution and performance gains from sprinting vary in a band between $3\times$ and $5\times$. In contrast, *PageRank*’s performance gains can often exceed $10\times$.

The coordinator uses performance profiles to optimize threshold strategies. *Linear Regression*’s strategy is aggressive and uses a low threshold that often induces sprints. This strategy arises from its relatively low variance in per-

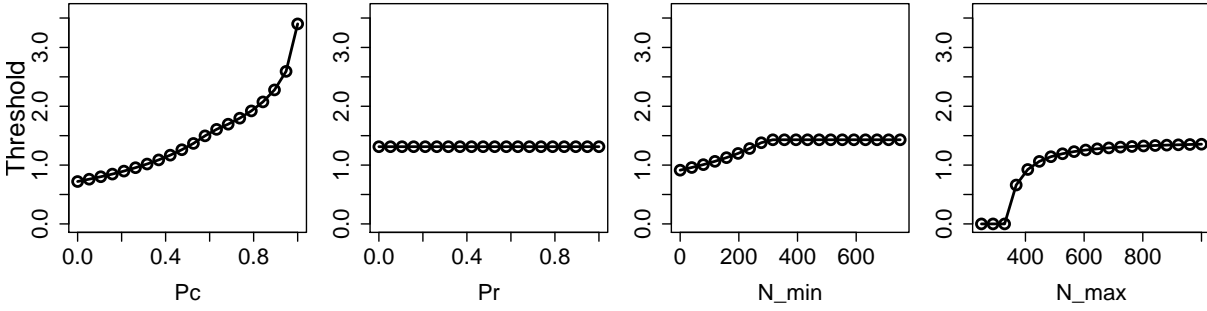


Figure 13. Sensitivity of sprinting threshold to architectural parameters—probability of staying in cooling and recovery p_c, p_r and the tripping curve N_{\min}, N_{\max} .

formance gains. If sprinting’s benefits are indistinguishable across tasks and epochs, an agent sprints indiscriminately and at every opportunity. *PageRank*’s strategy is more nuanced and uses a high threshold, which cuts her bimodal distribution and implements judicious sprinting. She sprints for tasks and epochs that benefit most (*i.e.*, those that see performance gains greater than $10\times$).

Figure 11 illustrates diversity in agents’ strategies by reporting their propensities to sprint. *Linear Regression* and *Correlation*’s narrow density functions and low thresholds cause these applications to sprint at every opportunity. The majority of applications, however, resemble *PageRank* with higher thresholds and judicious sprints.

6.4 Equilibrium versus Cooperation

Sprinting thresholds from equilibria are robust to strategic behavior and perform well. However, cooperative thresholds that optimize system throughput can perform even better. Our evaluation has shown that the sprinting game delivers 90% of the performance from cooperation. But we find that the game performs well only when the penalties from non-cooperative behavior are low. To understand this insight, let us informally define efficiency as the ratio of game performance from equilibrium thresholds (E-T) to optimal performance from cooperative thresholds (C-T).*

The sprinting game produces efficient equilibria because the penalty for non-cooperative behavior is triggering a power emergency. In the sprinting architecture, recovery is relatively inexpensive as batteries recharge and normal system operation resumes in ten epochs or less. However, higher penalties for non-cooperative behavior would degrade the game’s performance from equilibrium strategies. Figure 12 shows how efficiency falls as recovery from power emergencies become increasingly expensive. Recall that p_r is the probability an agent in recovery stays in that state.

Prisoner’s Dilemma. The sprinting game fails when an emergency requires indefinite recovery and p_r is one. In this

*We are informal because the domain of strategies is huge and we consider only the best cooperative threshold. A non-threshold strategy might provide even better performance.

extreme scenario, we would like the game to produce an equilibrium in which agents sprint yet avoid tripping the breaker. Unfortunately, the game has no equilibrium that avoids tripping the breaker and triggering indefinite recovery. If a strategic agent were to observe system dynamics that avoid tripping the breaker, which means P_{trip} is zero, she would realize that other agents have set high thresholds to avoid sprints. Her best response would be lowering her threshold and sprinting more often. Others would behave similarly and drive P_{trip} higher.

In equilibrium, P_{trip} would rise above zero and agents would eventually trip the breaker, putting the system into indefinite recovery. Thus, selfish agents would produce inefficient equilibria—the Prisoner’s Dilemma in which each agent’s best response performs worse than a cooperative one.

Enforcing Non-Equilibrium Strategies. The Folk theorem guides agents to a more efficient equilibrium by punishing agents whose responses harm the system. The coordinator would assign agents the best cooperative thresholds to maximize system performance from sprinting. When an agent deviates, she is punished such that performance lost exceeds performance gained. When applied to our previous example, punishments would allow the system to escape inefficient equilibria as agents are compelled to increase their thresholds and ensure P_{trip} remains zero.

Note that threat of punishment is sufficient to shape the equilibrium. Agents would adapt strategies based on the threat to avoid punishment. The coordinator could monitor sprints, detect deviations from assigned strategies, and forbid agents who deviate from ever sprinting again. Alternatively, agents could impose collective punishment by continuously sprinting, triggering emergencies, and degrading everyone’s performance. The threat of collective action deters agents who would deviate from the cooperative strategy.

6.5 Sensitivity Analysis

Figure 13 shows the sprinting threshold’s sensitivity to the game’s parameters. In practice, server engineering affects cooling and recovery durations (p_c, p_r) as well as the breaker’s trip curve (N_{\min}, N_{\max}).

As cooling duration increases, thresholds increase and agents sprint less. Agents are more cautious because sprinting in the current epoch requires many more epochs for cooling. The opportunity cost of sprinting mistakenly rises. As recovery duration increases, the cost of tripping the breaker increases. However, because each agent sprints to pursue her own performance while hoping others do not trip the breaker, thresholds are insensitive to recovery cost. When p_r is one, we have shown how agents encounter the Prisoner's Dilemma – see §6.4.

When N_{\min} and N_{\max} are small, the probability of tripping the breaker is high. Ironically, agents sprint more aggressively and extract performance now because emergencies that forbid future sprints are likely. When N_{\min} and N_{\max} are big, each agent sprints more judiciously as a sprint now affects the ability to sprint in the future.

7. Related Work

The sprinting problem falls into the general category of datacenter power management, but we are the first to identify the problem and propose a game-theoretic approach. The sprinting problem is made interesting by modern approaches to datacenter provisioning.

To minimize total cost of ownership and maximize return on investment, datacenters oversubscribe their servers [9, 14], bandwidth [8], branch circuits [16], cooling and power supplies [15, 20]. In datacenters, dynamic power capping [12] adjusts the power allocation to individual servers, enabling a rich policy space for power and energy management. In servers, managers could pursue performance while minimizing operating costs, which are incurred from energy and cooling [10, 11, 18, 31]. Researchers have sought to allocate server power to performance critical services via DVFS [26, 33].

Economics and game theory have proven effective in datacenter power and resource management [13]. Markets [21, 22] and price theory [42] have been applied to manage heterogeneous server cores. Demand response models have been proposed to handle power emergencies [32]. In addition to performance, fairness in game theory has been studied to incentivize users when sharing hardware in a cloud environment [17, 47, 48].

In this paper, we treat the sprinting management problem as a repeated game and seek an equilibrium that leads sprinting servers to expected behavior. Similar approaches have been applied to power control in wireless communication systems [28]. But we are the first to consider game theory for datacenter management, especially in the context of computational sprinting and power capping.

8. Conclusions

We present a sprinting architecture in which many, independent chip multiprocessors share a power supply. When an individual chip sprints, its excess heat constrains future sprints.

When a collection of chips sprint, its additional power demands raise the risk of power emergencies. For such an architecture, we present a management framework that determines when each chip should sprint.

We formalize sprint management as a repeated game. Agents represent chip multiprocessors and their workloads, executing sprints strategically on their behalf. Strategic behaviors produce an equilibrium in the game. We show that, in equilibrium, the computational sprinting game outperforms prior, greedy mechanisms by 4-6 \times and delivers 90% of the performance achieved from a more expensive, globally enforced mechanism.

Acknowledgments

This work is supported by NSF grants CCF-1149252 (CA-REER), CCF-1337215 (XPS-CLCCA), SHF-1527610, and AF-1408784. This work is also supported by STARnet, a Semiconductor Research Corporation program, sponsored by MARCO and DARPA. Any opinions, findings, conclusions, or recommendations expressed in this material are those of the author(s) and do not necessarily reflect the views of these sponsors.

References

- [1] Dynamic thermal management for high-performance microprocessors. In *Proceedings of the 7th IEEE International Symposium on High Performance Computer Architecture (HPCA)*, pages 171–182. IEEE Computer Society, 2001.
- [2] Control-theoretic techniques and thermal-RC modeling for accurate and localized dynamic thermal management. In *Proceedings of the 8th IEEE International Symposium on High Performance Computer Architecture (HPCA)*, pages 17–28. IEEE Computer Society, 2002.
- [3] S. Adlakha and R. Johari. Mean field equilibrium in dynamic games with strategic complementarities. *Operations Research*, 61(4):971–989, 2013.
- [4] S. Adlakha, R. Johari, G. Y. Weintraub, and A. Goldsmith. On oblivious equilibrium in large population stochastic games. In *Proceedings of the 49th IEEE Conference on Decision and Control (CDC)*, pages 3117–3124. IEEE, 2010.
- [5] S. Adlakha, R. Johari, and G. Y. Weintraub. Equilibria of dynamic games with many players: Existence, approximation, and market structure. *Journal of Economic Theory*, 2013.
- [6] Allen-Bradley. Bulletin 1489 UL489 circuit breakers. URL http://literature.rockwellautomation.com/idc/groups/literature/documents/td/1489-td001_-en-p.pdf, 2016. Online; accessed: 12-29-2016.
- [7] Ametek. Selection and sizing of batteries for UPS backup. URL <http://www.solidstatecontrolsinc.com/knowledgecenter/~media/85b8e51754c446bda1f38449f444471c.ashx>, 2016. Online; accessed: 12-29-2016.
- [8] H. Ballani, P. Costa, T. Karagiannis, and A. Rowstron. Towards predictable datacenter networks. In *Proceedings of the*

- ACM SIGCOMM Conference (SIGCOMM)*, pages 242–253. ACM, 2011.
- [9] L. A. Barroso, J. Clidaras, and U. Hözl. The datacenter as a computer: An introduction to the design of warehouse-scale machines. *Synthesis Lectures on Computer Architecture*, 8(3): 1–154, 2013.
- [10] A. Beloglazov, J. Abawajy, and R. Buyya. Energy-aware resource allocation heuristics for efficient management of data centers for cloud computing. *Future Generation Computer Systems*, 28(5):755–768, 2012.
- [11] J. L. Berral, Í. Goiri, R. Nou, F. Julià, J. Guitart, R. Gavaldà, and J. Torres. Towards energy-aware scheduling in data centers using machine learning. In *Proceedings of the 1st International Conference on Energy-Efficient Computing and Networking*, pages 215–224. ACM, 2010.
- [12] A. A. Bhattacharya, D. Culler, A. Kansal, S. Govindan, and S. Sankar. The need for speed and stability in data center power capping. *Sustainable Computing: Informatics and Systems*, 3(3):183–193, 2013.
- [13] J. S. Chase, D. C. Anderson, P. N. Thakar, A. M. Vahdat, and R. P. Doyle. Managing energy and server resources in hosting centers. In *Proceedings of the 18th Symposium on Operating Systems Principles (SOSP)*, pages 103–116. ACM, 2001.
- [14] G. Chen, W. He, J. Liu, S. Nath, L. Rigas, L. Xiao, and F. Zhao. Energy-aware server provisioning and load dispatching for connection-intensive internet services. In *Proceedings of the 5th USENIX Symposium on Networked Systems Design and Implementation (NSDI)*, pages 337–350. USENIX Association, 2008.
- [15] X. Fan, W.-D. Weber, and L. A. Barroso. Power provisioning for a warehouse-sized computer. In *Proceedings of the 34th Annual International Symposium on Computer Architecture (ISCA)*, pages 13–23. ACM, 2007.
- [16] X. Fu, X. Wang, and C. Lefurgy. How much power oversubscription is safe and allowed in data centers. In *Proceedings of the 8th ACM International Conference on Autonomic Computing (ICAC)*, pages 21–30. ACM, 2011.
- [17] A. Ghodsi, M. Zaharia, B. Hindman, A. Konwinski, S. Shenker, and I. Stoica. Dominant resource fairness: Fair allocation of multiple resource types. In *Proceedings of the 8th USENIX Conference on Networked Systems Design and Implementation (NSDI)*, pages 323–336. USENIX Association, 2011.
- [18] Í. Goiri, T. D. Nguyen, R. Bianchini, and Í. G. Presa. Coolair: Temperature-and variation-aware management for free-cooled datacenters. In *Proceedings of the 20th International Conference on Architectural Support for Programming Languages and Operating Systems (ASPLOS)*, pages 253–265. ACM, 2015.
- [19] S. Govindan, A. Sivasubramaniam, and B. Urgaonkar. Benefits and limitations of tapping into stored energy for datacenters. In *Proceeding of the 38th Annual International Symposium on Computer Architecture (ISCA)*, pages 341–351. IEEE, 2011.
- [20] S. Govindan, D. Wang, A. Sivasubramaniam, and B. Urgaonkar. Leveraging stored energy for handling power emergencies in aggressively provisioned datacenters. In *Proceedings of the 7th International Conference on Architectural Support for Programming Languages and Operating Systems (ASPLOS)*, pages 75–86. ACM, 2012.
- [21] M. Guevara, B. Lubin, and B. C. Lee. Navigating heterogeneous processors with market mechanisms. In *Proceeding of the 19th IEEE International Symposium on High Performance Computer Architecture (HPCA)*, pages 95–106. IEEE, 2013.
- [22] M. Guevara, B. Lubin, and B. C. Lee. Strategies for anticipating risk in heterogeneous system design. In *Proceeding of the 20th IEEE International Symposium on High Performance Computer Architecture (HPCA)*, pages 154–164. IEEE, 2014.
- [23] R. Gummadi, R. Johari, and J. Y. Yu. Mean field equilibria of multiarmed bandit games. In *Proceedings of the 13th ACM Conference on Electronic Commerce (EC)*, pages 655–655. ACM, 2012.
- [24] F. M. Harper and J. A. Konstan. The movielens datasets: History and context. *ACM Transactions on Interactive Intelligent Systems (TiiS)*, 5(4):19, 2015.
- [25] B. Hindman, A. Konwinski, M. Zaharia, A. Ghodsi, A. D. Joseph, R. Katz, S. Shenker, and I. Stoica. Mesos: A platform for fine-grained resource sharing in the data center. In *Proceedings of the 8th USENIX Conference on Networked Systems Design and Implementation (NSDI)*, pages 295–308. USENIX Association, 2011.
- [26] C.-H. Hsu, Y. Zhang, M. Laurenzano, D. Meisner, T. Wenisch, J. Mars, L. Tang, R. G. Dreslinski, et al. Adrenaline: Pinpointing and reining in tail queries with quick voltage boosting. In *Proceedings of the 21st IEEE International Symposium on High Performance Computer Architecture (HPCA)*, pages 271–282. IEEE, 2015.
- [27] K. Iyer, R. Johari, and M. Sundararajan. Mean field equilibria of dynamic auctions with learning. *ACM SIGecom Exchanges*, 10(3):10–14, 2011.
- [28] M. Le Treust and S. Lasaulce. A repeated game formulation of energy-efficient decentralized power control. *Wireless Communications, IEEE Transactions on*, 9(9):2860–2869, 2010.
- [29] Y. Li, B. Lee, D. Brooks, Z. Hu, and K. Skadron. CMP design space exploration subject to physical constraints. In *Proceedings of the 12th IEEE International Symposium on High Performance Computer Architecture (HPCA)*, pages 17–28. IEEE, 2006.
- [30] M. Lichman. UCI machine learning repository. URL <http://archive.ics.uci.edu/ml>, 2013.
- [31] M. Lin, A. Wierman, L. L. Andrew, and E. Thereska. Dynamic right-sizing for power-proportional data centers. *IEEE/ACM Transactions on Networking (TON)*, 21(5):1378–1391, 2013.
- [32] Z. Liu, A. Wierman, Y. Chen, B. Razon, and N. Chen. Data center demand response: Avoiding the coincident peak via workload shifting and local generation. *Performance Evaluation*, 70(10):770–791, 2013.
- [33] D. Lo, L. Cheng, R. Govindaraju, L. A. Barroso, and C. Kozyrakis. Towards energy proportionality for large-scale latency-critical workloads. In *Proceeding of the 41st Annual International Symposium on Computer Architecture (ISCA)*, pages 301–312. IEEE, 2014.

- [34] R. Meusel, S. Vigna, O. Lehmborg, and C. Bizer. Web data commons - hyperlink graphs. URL <http://webdatacommons.org/hyperlinkgraph/index.html>, 2012. Online; accessed: 12-29-2016.
- [35] Z. Mwaikambo, A. Raj, R. Russell, J. Schopp, and S. Vaddagiri. Linux kernel hotplug cpu support. In *Linux Symposium*, volume 2, 2004.
- [36] A. Raghavan. *Computational sprinting: Exceeding sustainable power in thermally constrained systems*. PhD thesis, University of Pennsylvania, 2013.
- [37] A. Raghavan, Y. Luo, A. Chandawalla, M. Papaefthymiou, K. P. Pipe, T. F. Wenisch, and M. M. K. Martin. Computational sprinting. In *Proceedings of the 18th IEEE International Symposium on High Performance Computer Architecture (HPCA)*, pages 1–12. IEEE Computer Society, 2012.
- [38] A. Raghavan, L. Emurian, L. Shao, M. Papaefthymiou, K. P. Pipe, T. F. Wenisch, and M. M. Martin. Computational sprinting on a hardware/software testbed. In *Proceedings of the 18th International Conference on Architectural Support for Programming Languages and Operating Systems (ASPLOS)*, pages 155–166. ACM, 2013.
- [39] A. Raghavan, L. Emurian, L. Shao, M. Papaefthymiou, K. P. Pipe, T. F. Wenisch, and M. M. Martin. Utilizing dark silicon to save energy with computational sprinting. *IEEE Micro*, 33(5):20–28, 2013.
- [40] L. Shao, A. Raghavan, L. Emurian, M. C. Papaefthymiou, T. F. Wenisch, M. M. Martin, and K. P. Pipe. On-chip phase change heat sinks designed for computational sprinting. In *Proceedings of the 30th Annual Semiconductor Thermal Measurement and Management Symposium (SEMI-THERM)*, pages 29–34. IEEE, 2014.
- [41] M. Skach, M. Arora, C.-H. Hsu, Q. Li, D. Tullsen, L. Tang, and J. Mars. Thermal time shifting: Leveraging phase change materials to reduce cooling costs in warehouse-scale computers. In *Proceedings of the 42nd Annual International Symposium on Computer Architecture (ISCA)*, pages 439–449. IEEE, 2015.
- [42] T. Somu Muthukaruppan, A. Pathania, and T. Mitra. Price theory based power management for heterogeneous multi-cores. In *Proceedings of the 19th International Conference on Architectural Support for Programming Languages and Operating Systems*, ASPLOS '14, pages 161–176. ACM, 2014.
- [43] J. Stamper, A. Niculescu-Mizil, S. Ritter, G. Gordon, and K. Koedinger. Algebra I 2006-2007. Challenge data set from KDD Cup 2010 educational data mining challenge. URL <http://pslcdatashop.web.cmu.edu/KDDCup/downloads.jsp>, 2010.
- [44] F. Volle, S. V. Garimella, M. Judds, et al. Thermal management of a soft starter: Transient thermal impedance model and performance enhancements using phase change materials. *Power Electronics, IEEE Transactions on*, 25(6):1395–1405, 2010.
- [45] X. Wang, M. Chen, C. Lefurgy, and T. W. Keller. Ship: A scalable hierarchical power control architecture for large-scale data centers. *Parallel and Distributed Systems, IEEE Transactions on*, 23(1):168–176, 2012.
- [46] M. Zaharia, M. Chowdhury, M. J. Franklin, S. Shenker, and I. Stoica. Spark: Cluster computing with working sets. In *Proceedings of the 2nd USENIX Conference on Hot Topics in Cloud Computing*, volume 10, page 10, 2010.
- [47] S. M. Zahedi and B. C. Lee. REF: Resource elasticity fairness with sharing incentives for multiprocessors. In *Proceedings of the 19th International Conference on Architectural Support for Programming Languages and Operating Systems (ASPLOS)*, pages 145–160. ACM, 2014.
- [48] S. M. Zahedi and B. C. Lee. Sharing incentives and fair division for multiprocessors. *IEEE Micro*, 35(3):92–100, 2015.
- [49] W. Zheng and X. Wang. Data center sprinting: Enabling computational sprinting at the data center level. In *Proceedings of the 35th International Conference on Distributed Computing Systems (ICDCS)*, pages 175–184. IEEE, 2015.